

# WINTER SEASONAL EMPLOYMENT

- **Adventure Tourism**
- **Retail**
- **Snow Removal**
- **BC Ski Resorts**



**A compilation organized  
by TQM Consulting in association with the  
Kamloops Work Search Centres  
© October 2010**

## Table of Contents

Introduction.....	4
-------------------	---

### Winter Tourism

---

➤ Overview: The Adventure Tourism and Recreation Sector.....	6
➤ Career Planning.....	6
▶ Job Outlook.....	6
▶ Working Conditions.....	7
▶ Types of Careers.....	7
▶ Training/Education.....	8
▶ Wages.....	8
▶ Accommodations.....	9
➤ Finding Work in Adventure Tourism.....	10
▶ Season.....	10
▶ Qualifications.....	10
▶ What Kamloops Employers look for when hiring.....	12
➤ Website Resources.....	13
➤ Employer Listings.....	14
▶ BC Helicopter and Snowcat Skiing Operators.....	14
▶ Other BC Resorts.....	18
▶ BC Cross Country Ski Clubs.....	23

### Retail

---

➤ Introduction to Retail.....	25
➤ Career Planning.....	25
▶ Job Outlook.....	25
▶ Types of Careers.....	25
▶ Education and Training.....	26
▶ Working Conditions.....	26
▶ Wage.....	26
➤ Website Resources.....	27
➤ Quick Work Search.....	28
▶ How to Apply.....	28
▶ Peak Hiring Time.....	28
▶ Prepare to Get Hired.....	28
➤ Retail Employer Contacts.....	29
▶ Aberdeen Mall.....	32
▶ More Kamloops Shopping Malls.....	33

## Snow Removal

---

➤ Career Planning.....	35
▶ Job Outlook.....	35
▶ Description of Positions.....	35
▶ Wages.....	35
▶ Working Conditions.....	35
▶ Education/Training.....	36
▶ Hiring Practices.....	36
➤ Employer Contacts.....	37

## BC Ski Resorts Employment (Separate New Section in Binder)

---

➤ Introduction to Ski Resort Jobs.....	3
➤ Job Opportunities at Ski Resorts.....	3
➤ Education / Training.....	4
➤ BC Resorts Employment Information.....	5
▶ Sun Peaks Ski Resort.....	5
▶ Big White Ski Resort.....	7
▶ Silver Star Ski Resort.....	9
▶ Whistler Blackcomb Ski Resort.....	14
▶ Revelstoke Mountain Resort.....	18
➤ Website Resources.....	19
➤ Ski Resorts in Western Canada.....	20



## Introduction – Winter Seasonal Employment

Are you thinking about finding a seasonal job to pick up some extra cash or make ends meet in between jobs? Many companies are desperate for extra help based on the time of year. Retailers, for example, require sales clerks for the busy holiday shopping season.

Seasonal jobs are temporary, often part-time and generally provide no benefits. However, many hard-working employees are invited to stay on if permanent positions become available. Some seasonal jobs are full-time for a defined period, like working at a ski resort during the ski season.

The following information will assist you to find work in winter tourism, the retail sector, and snow removal.





# WINTER TOURISM

## Adventure Tourism and Recreation Sector



A compilation organized  
by TQM Consulting in association with  
the Kamloops Work Search Centres  
© October 2010

## Overview: The Adventure Tourism and Recreation Sector

British Columbia is known for its diverse landscape of rolling hills, snow capped mountains, and diverse backcountry terrain, which offers a great backdrop for adventure and recreation. The increased interest in unusual vacations offered by BC's natural and unspoiled landscape makes the Adventure Tourism and Recreation industry a growing sector.

In the winter months this sector can include everything from heli-skiing to ice fishing, backcountry skiing to snowmobiling, and snowshoeing to dog-sledding.

Activities such as these often require other services such as transportation, accommodation, food and beverages services, and other specialized services that make the adventure and recreation experience complete.

The following material will guide you through finding work as a winter seasonal employee. Most adventure tourism work has a high and a low season, and there are opportunities to travel domestically and internationally between the seasons.<sup>1</sup>

## Career Planning

### Job Outlook

Adventure Tourism and Recreation is growing fast due to changing travel and tourism trends. Increasing the growth is today's active travel consumers, who are eager to authentically experience nature and wilderness as part of their holiday plans. In the area of Adventure Tourism and Recreation, anticipated labour demand by 2015 is 13,100 workers.<sup>2</sup>



Photo taken from [www.whistlerblackcomb.com](http://www.whistlerblackcomb.com)

<sup>1</sup> Taken from <http://www.attto.org.nz/Tourism-Careers> (Accessed on Oct 19/07)

<sup>2</sup> Taken from <http://www.go2hr.ca> (Accessed Oct 15/10)

## Life in Adventure Tourism

### Working Conditions<sup>3</sup>

Workers in the Adventure Tourism and Recreation sector can work in a variety of different environments with different skill sets - some will have their job based indoors and others often spend much of their time outdoors (and may work under a variety of weather conditions). Some will have little experience and training and others will be required to have a very specific skill set and post secondary level of education.

Much of the work in this industry is characterized as seasonal or part-time (so people entering this field should expect some night work, weekend work and irregular hours). This sector draws a younger occupational group (many are under 25 with the average age being 31). Depending on the position that you are hired for, work can be physically tiring and there can be a risk of injury.



### Types of Careers

Working in Adventure Tourism can be a very exciting and inspiring career choice. People working outdoors in this industry are generally adventurous people who have a love for sharing their interest and experience with others. Some people begin by discovering an interest in a particular outdoor sport such as mountaineering, bushwalking or paragliding. Their interest develops into an aspiration to share this with others.

#### Opportunities in Adventure Tourism:

- Tour Leader/Tour Guide
- Small Business Owner (tours, accommodation, transport)
- Outdoor Education Officer
- Tour Bus Driver
- Hotel Manager
- Food & Beverage Servers

<sup>3</sup> The following section has been written based on information provided by the following two websites: [www.workfutures.bc.ca](http://www.workfutures.bc.ca) & [www.ilo.org/public/english/dialogue/sector/sectors/tourism/wkgcond.htm](http://www.ilo.org/public/english/dialogue/sector/sectors/tourism/wkgcond.htm). (Accessed on Sept 29/10) [www.thecareersguide.com](http://www.thecareersguide.com)

## **Training & Education**

---

There are many certificates, diplomas and degrees offered for Adventure Tourism throughout various BC Colleges and Universities. For a complete list please visit the Education Planner website at [www.educationplanner.bc.ca](http://www.educationplanner.bc.ca).

In Kamloops, Thompson Rivers University offers the following in relation to Adventure Tourism:

### **Degree Programs:**

- Bachelor of Tourism Management in Adventure Tourism

### **Diploma Programs:**

- Adventure Guide
- Adventure Management
- Canadian Mountain and Ski Guide

### **Certificates:**

- South America Adventure Sport
- Adventure Sport
- Canadian Mountain and Ski Guide

For more specific information, please go to the Thompson Rivers University website at [www.tru.ca](http://www.tru.ca).

## **Wages<sup>4</sup>**

---

There is a wide range of potential earnings in Adventure Tourism – all based on job title and experience. While someone in a Management/Executive position has the potential of earning up to \$70,000 per year, the average entry level job has a starting wage of \$8.00 per hour. It is important to note, however, in most cases the employers provide each entry level staff member an opportunity for a raise after the first three months.

In addition to the basic wage earned, some employers (usually the larger resorts) offer all full time employees who commit to a full season additional benefits or discount programs. Examples of such benefits include: free ski pass for the primary resort of employment and additional discount offers for partnering resorts. The staff pass is also each employee's passport to a variety of discounts on food, skis and snowboards, other retail items, rentals and great lessons.

---

<sup>4</sup> Information compiled from [www.bigwhite.com](http://www.bigwhite.com), [www.silverstarmtn.com](http://www.silverstarmtn.com), [www.whistlerblackcomb.com](http://www.whistlerblackcomb.com), & [www.workfutures.bc.ca](http://www.workfutures.bc.ca) (Accessed on Oct 19/07)

## Accommodations

---

Depending on the location of your employer, most employees have the option of either travelling back and forth to work each day or living in accommodations at the resort.

If you are looking for accommodations on site, some employers provide a listing of available accommodations on their website. Based on a variety of websites visited for the Interior of BC, the average employee pays from \$250 to \$450 per month for shared accommodations. This ranges from several friends renting a house to two or four people renting a one bedroom condo.



### Season<sup>6</sup>

---

With weather being a dependant factor with much of the activities offered for the winter season, the official start date for the winter season can be as early as mid-October or as late as December. Because of this, some time can pass between your successful job interview and your employment start date. Be prepared for this by having sufficient money to carry you for at least one month. In most cases, the season of employment will be from mid November to mid-April.

### Qualifications

---

#### Entry Level Positions:

With the variety of job options in this industry - from entry level to management - all jobs will have their own set of expected skills and requirements. Generally speaking, most entry level positions will not require any formal level of education and may not even require previous experience. However, applicants with previous experience and certificates will be given preference. Some recognized training programs within the tourism industry are Serving It Right, FoodSafe, and SuperHost. Successful candidates must possess the following basic transferable skills:

- Outgoing, cheerful demeanor
- Fast, friendly and efficient customer service
- Enjoys working with the public
- Excellent communication skills (both written and verbal)
- A good team player
- Strong attention to detail
- Ability to work in a busy resort setting with limited supervision
- Previous experience in department of employment (cash handling, Point Of Sale (POS) system or computer skills, food handling/cooking)
- Proven time management skills
- Ability to speak a second language a definite asset (German, French and Japanese specifically)
- Reliable

#### Specialty or Supervisory Positions:

For the successful applicants looking to fill a position with the specialty or supervisory positions, the following additional transferable skills will/may be required above and beyond the level entry positions:

- Ability to perform the required duties for the department
- Previous experience/training working in the setting of employment
- Higher level of skiing or snowboarding skills

---

<sup>5</sup> Information compiled from [www.workfutures.bc.ca](http://www.workfutures.bc.ca) & a variety of job descriptions from various resort websites (Accessed on Oct 15, 2010)

<sup>6</sup> Taken from [www.bigwhite.com](http://www.bigwhite.com) (Accessed on Oct 19, 2010)

- A strong work ethic
- Current certification in area of expertise (First Aid, Journeyman Millwright, Level 4 Canadian Ski Instructors' Alliance (CSIA) and/or Canadian Association of Snowboard Instructors (CASI) + Level 2 Canadian Ski Coaches Federation (CSCF) or equivalent)
- Must be able to maintain a calm, friendly manner under periods of stress
- Good physical condition; willing and able to work outdoors in all weather conditions; ability to work at excessive heights
- Valid BC Class 5 Driver's Licence – must submit driver's abstract annually

### **Management Positions:**

Management positions require a greater degree of responsibility and knowledge. With such positions, the following transferable skills may be required:

- Post secondary education: Business Administration, Education or related diploma/degree (or a combination of education and experience)
- Outstanding verbal and written communication skills
- Proven interpersonal and motivational skills
- Proficient use of Microsoft computer software and Point Of Sale (POS) software
- Proven track record in customer service and a team player
- Supervisory experience an asset
- Good planning, analytical, and problem-solving abilities
- Ability to develop and implement policies, monitor quality control, develop niche markets and control inventories
- Leadership ability
- Desire to serve others
- Ability to relate to other professionals and a capacity to work well under pressure
- Ability to deal with change and technology

## What Kamloops Employers Look for When Hiring

A recent survey of Kamloops Tourism employers offers this valuable information on their hiring practices.

- Attitude is the number one consideration for many tourism employers. Think about how to demonstrate a positive attitude when you are meeting employers. Smile during the interview and show enthusiasm for the organization and the job!
- Present a neat and specific resume, highlighting skills, education and second language (if any). Include a specific job objective.
- Many Tourism Operators will offer training to candidates that lack experience, but have an upbeat and positive attitude.
- Make sure that you always indicate which position you are applying for on your resume.
- Past seasonal employees will be re-considered, but, in most cases, you must re-apply year after year.
- Offer spectacular customer service.
- Acquire some tourism experience while you are completing your diploma or degree.
- When you are preparing for an interview, dress the part - if in doubt, dress up.
- Research the company before the interview.
- Come to the interview with ideas and solutions to resolve problems.
- As an employee, get involved in improving yourself and your department.



Photos taken from ©  
[www.realm.net/tourism](http://www.realm.net/tourism)

## Website Resources

- [www.cthrc.ca](http://www.cthrc.ca) - *Canadian Tourism and Human Resource Council* – The CTHRC brings together tourism business, labour unions, provincial, territorial and national associations, education/training providers and government to address the tourism industry's human resource needs.
- [www.go2hr.ca](http://www.go2hr.ca) – The website for people in tourism. Find out more about tourism human resource management practices, search jobs, and learn about tourism careers and education.
- [www.workfutures.bc.ca](http://www.workfutures.bc.ca) – *Work Futures* provides a comprehensive description of close to 200 occupations.
- [www.attto.org.nz/Tourism-Careers](http://www.attto.org.nz/Tourism-Careers) - *Aviation, Tourism & Travel Training Organization* – A website that provides information on careers in Tourism, the different sectors and the suggested options for training.
- [www.totabc.com](http://www.totabc.com) – The *Thompson Okanagan Tourism Association* is a marketing body for tourism businesses and operators in the Thompson Okanagan region.
- [www.aboriginalbc.ca](http://www.aboriginalbc.ca) – *Aboriginal Tourism Association of BC* gives information on the First Nations culture, aboriginal culture and hospitality.

## Job Search

- [www.skitown.com/resortguide/statemap.cfm/bc/BritishColumbia/](http://www.skitown.com/resortguide/statemap.cfm/bc/BritishColumbia/) - Provides a quick resort guide map for locating ski resorts within Canada and the USA.
- [www.cooljobscanada.com](http://www.cooljobscanada.com) – Tourism and hospitality jobs in Canada.
- [www.tourismworkweb.com](http://www.tourismworkweb.com) – A quick link to some jobs in tourism.
- [www.hcareers.ca](http://www.hcareers.ca) – A job bank website that claims to have the most restaurant jobs, retail jobs, hotel jobs and hospitality jobs.
- [www.resortjobs.com](http://www.resortjobs.com) – A link to resort jobs within Canada or Internationally
- [www.cic.gc.ca](http://www.cic.gc.ca) - *Citizenship and Immigration Canada* – Website with information on how to apply for a working visa.
- [www.extremejobs.ca](http://www.extremejobs.ca) – A great source for Tourism jobs in Canada.
- [www.landings.ca](http://www.landings.ca) – Landings: Tourism Management Hiring Solutions is based out of Victoria but operates throughout Canada to provide human resource services for those seeking employment.

Photos courtesy of Tourism Whistler on [www.bcadventure.com](http://www.bcadventure.com)

## Employer Listings

The following list has been compiled from the following website resources: [www.skicanada.org](http://www.skicanada.org), and [www.bcadventure.com](http://www.bcadventure.com). This list should be considered as a starting point for your research. Some of the information may have changed since the information was accessed.

### British Columbia Helicopter and Snowcat Skiing Operators

#### **Adventure West Resorts Ltd.**

9701 201st Street  
Langley, BC V1M 3E7  
Tel: (604) 513-5008  
Fax: (604) 513-0194  
Website: [www.adventurewestresorts.com](http://www.adventurewestresorts.com)

#### **Backcountry Snowcats Ltd.**

Hurley Pass, Pemberton, BC  
Tel: (604) 932-2166  
Email: [info@snowcats.ca](mailto:info@snowcats.ca)  
Website: [www.snowcats.ca](http://www.snowcats.ca)

#### **Baldface Mountain Lodge**

PO Box 906  
Nelson, BC V1L 6A5  
Tel: (250) 352-0006  
Fax: (250) 352-0800  
Email: [info@baldface.net](mailto:info@baldface.net)  
Website: [www.baldface.net](http://www.baldface.net)

#### **Bella Coola Heli Sports Inc.**

PO Box 616  
Whistler, BC V0N 1B0  
Tel: (604) 932-3000  
Fax: (604) 932-5054  
Email: [info@bellacoolahelisports.com](mailto:info@bellacoolahelisports.com)  
Website: [www.bellacoolahelisports.com](http://www.bellacoolahelisports.com)

#### **Big Red Cats**

PO Box 742  
Rossland, BC V0G 1Y0  
Tel: (250) 362-2271  
Email: [ski@bigredcats.com](mailto:ski@bigredcats.com)  
Website: [www.bigredcatskiing.com](http://www.bigredcatskiing.com)

#### **Blackcomb Cat Skiing**

PO Box 1357  
Whistler, BC V0N 1B0  
Tel: (604) 932-8484  
Fax: (604) 932-8410  
Email: [info@blackcombsnowmobile.com](mailto:info@blackcombsnowmobile.com)  
Website: [www.blackcombsnowmobile.com](http://www.blackcombsnowmobile.com)

#### **Blackcomb Helicopters Ltd.**

PO Box 1241  
Whistler, BC V0N 1B0  
Tel: (604) 938-1700  
Fax: (604) 938-1706  
Email: [info@blackcombhelicopters.com](mailto:info@blackcombhelicopters.com)  
Website: [www.blackcombhelicopters.com](http://www.blackcombhelicopters.com)

#### **Black Tusk Helicopter Inc.**

46041 Government Road, Squamish Airport  
Box 1469  
Squamish, BC V8B 0B1  
Tel: (604) 898-4800  
Fax: (604) 898-9688  
Email: [info@blacktuskhelicopter.com](mailto:info@blacktuskhelicopter.com)  
Website: [www.blacktuskhelicopter.com](http://www.blacktuskhelicopter.com)

#### **Bracewell's Alpine Wilderness Adventures**

Box 8, Tatlayoko Lake, BC V0L 1W0  
Tel: (250) 476-1169  
Toll Free: 1-866-476-1169  
Email: [alexbrac@telus.net](mailto:alexbrac@telus.net)  
Website: [www.bracewell.com](http://www.bracewell.com)

#### **Cariboo Snowcat Skiing & Tours Ltd.**

PO Box 998  
Valemount, BC V0E 2Z0  
Tel: (250) 566-9809  
Fax: (250) 566-9190  
Email: [info@caribooskiing.com](mailto:info@caribooskiing.com)

## British Columbia Helicopter and Snowcat Skiing Operators

---

### Chatter Creek Cat Skiing

Box 333  
Golden, BC V0A 1H0  
Tel: (250) 344-1199  
Toll Free: 1-877-311-7199  
Fax: (250) 344-2229  
Email: [info@chattercreekcatskiing.com](mailto:info@chattercreekcatskiing.com)  
Website: [www.chattercreek.ca](http://www.chattercreek.ca)

### Coast Range Heliskiing Ltd.

1641 Airport Rd.  
PO Box 16  
Pemberton, BC V0N 2L0  
Tel: (604) 894-1144  
Toll Free: 1-800-701-8744  
Fax: (604) 894-1146  
Email: [info@coastrangeheliskiing.com](mailto:info@coastrangeheliskiing.com)  
Website: [www.coastrangeheliskiing.com](http://www.coastrangeheliskiing.com)

### Crescent Spur Heli-Skiing

General Delivery  
Crescent Spur, BC V0J 3E0  
Tel: (250) 553-2300  
Toll Free: 1-800-715-5532  
Fax: (250) 553-2301  
Email: [info@crecentspur.com](mailto:info@crecentspur.com)  
Website: [www.crescentspur.com](http://www.crescentspur.com)

### Fernie Wilderness Adventures

Box 645  
Fernie, BC V0B 1M0  
Tel: (250) 423-6704  
Toll Free: 1-877-423-6704  
Fax: (250) 423-6717  
Email: [info@fernieadventures.com](mailto:info@fernieadventures.com)  
Website: [www.fernieadventures.com](http://www.fernieadventures.com)

### Great Canadian Heliskiing

PO Box 175 (625 Lapp Road)  
Golden, BC V0A 1H0  
Tel: (250) 344-2326  
Fax: (250) 344-2316  
Email: [info@canadianheli-skiing.com](mailto:info@canadianheli-skiing.com)  
Website: [www.canadianheliskiing.com](http://www.canadianheliskiing.com)

### Highland Powder Skiing

PO Box 200  
Meadow Creek, BC V0G 1N0  
Tel / Fax: (250) 366-4260  
Website: [www.highlandpowderskiing.com](http://www.highlandpowderskiing.com)

### Island Lake Resort Group Inc.

602A 2<sup>nd</sup> Ave  
PO Box 1229  
Fernie, BC V0B 1M0  
Tel: (250) 423-3700  
Toll Free: 1-888-422-8754  
Fax: (250) 423-4055  
Email: [info@islandlakelodge.com](mailto:info@islandlakelodge.com)  
Website: [www.islandlakelodge.com](http://www.islandlakelodge.com)

### Klondike Heli-Skiing

PO Box 377  
Atlin, BC V0W 1A0  
Tel: (250) 651-7546  
Fax: (250) 567-7123  
Email: [heliski@tirol.com](mailto:heliski@tirol.com)  
Website:  
<http://www.atlinheliski.com/pages/en/home.php>

### Last Frontier Heliskiing Ltd.

PO Box 1118  
Vernon, BC V1T 6N4  
Tel: (250) 558-7980  
Fax: (250) 558-7981  
Toll Free : 1-888-655-5566  
Email: [info@lastfrontierheli.com](mailto:info@lastfrontierheli.com)  
Website: [www.lastfrontierheli.com](http://www.lastfrontierheli.com)

### Mike Wiegele Helicopter Skiing

PO Box 159  
1 Harrwood Drive  
Blue River, BC V0E 1J0  
Tel: (250) 673-8381  
Toll Free: 1-800-661-9170  
Fax: (250) 673-8464  
Email: [jobs@wiegele.com](mailto:jobs@wiegele.com)  
Website: [www.wiegele.com](http://www.wiegele.com)

**Monashee Powder Adventures**

13912 Ponderosa Way  
Coldstream, BC V1B 1A4  
Tel: (250) 545-0661  
Toll Free: 1-866-678-7669  
Fax: (250) 545-0672  
Email: [bookings@monasheepowder.com](mailto:bookings@monasheepowder.com)  
Website: [www.monasheepowder.com](http://www.monasheepowder.com)

**Mustang Powder Adventures**

RR #2, Site 23, Comp. 11  
Chase, BC V0E 1M0  
Tel: (250) 679-8125  
Toll Free: 1-888-884-4666  
Fax: (250) 679-2999  
Email: [info@mustangpowder.com](mailto:info@mustangpowder.com)  
Website: [www.mustangpowder.com](http://www.mustangpowder.com)

**Northern Escape Heli Skiing Inc.**

PO Box 59  
Terrace BC V8G 4A2  
Tel: (250) 615-3184  
Fax: (250) 615-3181  
Toll Free: 1-866-619-3184  
Email: [info@neheliski.com](mailto:info@neheliski.com)  
Website: [www.northernescapeheliskiing.ca](http://www.northernescapeheliskiing.ca)

**Powder Mountain Catskiing Ltd.**

PO Box 1116  
Whistler, BC V0N 1B0  
Tel: (604) 932-0169  
Toll Free: 1-877-793-7349  
Fax: (604) 932-4667  
Email: [info@powdermountaincatskiing.com](mailto:info@powdermountaincatskiing.com)  
Website:  
[www.powdermountaincatskiing.com](http://www.powdermountaincatskiing.com)

**Purcell Helicopter Skiing**

PO Box 1530 (438 Lafontaine Road)  
Golden, BC V0A 1H0  
Tel: (250) 344-5410  
Toll Free: 1-877-435-4754  
Fax: (250) 344-6076  
Email: [info@purcellhelicopterskiing.com](mailto:info@purcellhelicopterskiing.com)  
Website: [www.purcellhelicopterskiing.com](http://www.purcellhelicopterskiing.com)

**R. K. Heliski**

PO Box 695  
Invermere, BC V0A 1K0  
Tel: (250) 342-3889  
Toll Free: 1-800-661-6060  
Fax: (250) 342-3466  
Email: [info@rkheliski.com](mailto:info@rkheliski.com)  
Website: [www.rkheliski.com](http://www.rkheliski.com)

**Retallack Alpine Adventures Ltd.**

PO Box 147  
New Denver, BC V0G 1S0  
Tel: (604) 354-5324  
Toll Free: 1-800-330-1433  
Fax: (604) 648-8462  
Email: [info@retallack.com](mailto:info@retallack.com)  
Website: [www.retallack.com](http://www.retallack.com)

**Revelstoke Cat Skiing**

Toll Free: 1-866-373-4754  
Tel: (250) 814-5060  
Email:  
[catski@revelstokemountainresort.com](mailto:catski@revelstokemountainresort.com)

**Revelstoke Mountain Resort  
Selkirk Tangiers Helicopter Skiing**

Tollfree: 1.800.663.7080  
Phone: 1.250.837.5378  
Fax: 1.250.837.5766  
PO Box 130  
Revelstoke, B.C. V0E 2S0  
Email: [info@selkirk-tangiers.com](mailto:info@selkirk-tangiers.com)  
Website: [www.selkirk-tangiers.com](http://www.selkirk-tangiers.com)

**Robson Helimagic Inc.**

3010 Selwyn Road  
Valemount, BC V0E 2Z0  
Tel: (250) 566-4700  
Toll Free: 1-877-454-4700  
Fax: (250) 566-4333  
Email: [info@robsonhelimagic.com](mailto:info@robsonhelimagic.com)  
Website: [www.robsonhelimagic.com](http://www.robsonhelimagic.com)

## British Columbia Helicopter and Snowcat Skiing Operators Continued...

---

### **Selkirk Tangiers Heli - Skiing**

PO Box 130  
Revelstoke, BC V0E 2S0  
Tel: (250) 837-5378  
Toll Free: 1-800-663-7080  
Fax: (250) 837-5766  
Email: [reservations@selkirk-tangiers.com](mailto:reservations@selkirk-tangiers.com)  
Website: [www.selkirk-tangiers.com](http://www.selkirk-tangiers.com)

### **Selkirk Wilderness Skiing Ltd.**

Box 10, 105 Meadow Creek Road  
Meadow Creek, BC V0G 1N0  
Tel: (250) 366-4424  
Toll Free: 1-800-799-3499  
Fax: (250) 366-4419  
E-mail: [info@selkirkwilderness.com](mailto:info@selkirkwilderness.com)  
Website: [www.selkirkwilderness.com](http://www.selkirkwilderness.com)

### **Skeena Heliskiing**

PO Box 1032  
Smithers, BC V0J 2N0  
Tel: (250) 877-7811  
Fax: (604) 648-8349  
Email: [ski@skeenaheliskiing.com](mailto:ski@skeenaheliskiing.com)  
Website: <http://skeenaheliskiing.com/>

### **Snowwater Heli - Skiing Inc.**

PO Box 1340  
Rossland, BC V0G 1Y0  
Tel: (250) 359-7650  
Toll Free: 1-866-722-7669  
Fax: (250) 359-7650  
Email: [info@snowwater.com](mailto:info@snowwater.com)  
Website: [www.snowwaterheliskiing.com](http://www.snowwaterheliskiing.com)

### **T L H Heliskiing Ltd.**

PO Box 1118  
Vernon, BC V1T 6N4  
Tel: (250) 558-5379  
Toll Free : 1-800-667-4584  
Fax: (250) 558-5389  
Email: [info@tlheliskiing.com](mailto:info@tlheliskiing.com)  
Website: [www.tlheliskiing.com](http://www.tlheliskiing.com)

### **Torwood Resort**

PO Box 569  
Hudson's Hope, BC V0C 1V0  
Tel: (250) 787-4205  
Toll Free: 1-866-575-4354  
Fax: (250) 787-6407  
Email: [info@torwoodresort.com](mailto:info@torwoodresort.com)  
Website: [www.torwoodresort.com](http://www.torwoodresort.com)

### **Tweedsmuir Lodge**

PO Box 190  
Bella Coola, BC V0T 1C0  
Toll Free: 1-877-982-2407  
Email: [info@tweedsmuirparklodge.com](mailto:info@tweedsmuirparklodge.com)  
Website: [www.tweedsmuirparklodge.com](http://www.tweedsmuirparklodge.com)

### **Valhalla Powdercats**

PO Box 39  
Nelson, BC V1L 6A5  
Tel: (250) 359-7665  
Toll Free: 1-866-722-7669  
Fax: (250) 359-7650  
Email: [info@valhallapow.com](mailto:info@valhallapow.com)  
Website: [www.valhallapow.com](http://www.valhallapow.com)

### **Whistler Heli-Skiing Ltd.**

The Crystal Lodge  
PO Box 368 (#3-4241 Village Stroll)  
Whistler, BC V0N 1B0  
Tel: (604) 932-4105  
Toll Free: 1-888-435-4754  
Fax: (604) 938-1225  
Email: [heliski@direct.ca](mailto:heliski@direct.ca)  
Website: [www.whistlerheliskiing.com](http://www.whistlerheliskiing.com)

### **White Grizzly Adventures Ltd.**

PO Box 129  
110 Duncan Dam Haul Road  
Meadow Creek, BC V0G 1N0  
Tel: (250) 366-4306  
Toll Free: 1-800-843-5557  
Fax: (250) 366-4425  
Email: [snowcats@direct.ca](mailto:snowcats@direct.ca)  
Website: [www.whitegrizzly.com](http://www.whitegrizzly.com)

**Other British Columbia Resorts** – The following websites were used to compile the list: [bcadventure.com](http://bcadventure.com) and [bc-resorts.com](http://bc-resorts.com). The resorts listed offer other winter seasonal activities such as ice fishing, snowmobiling, snowshoeing, or cross-country skiing.

---

**Beaver Lake Mountain Resort**

6350 Beaver Lake Road  
Winfield, BC V4V 1T5  
Tel: (250) 762-2225  
Email: [info@beaverlakeresort.com](mailto:info@beaverlakeresort.com)  
Website: [www.beaverlakeresort.com](http://www.beaverlakeresort.com)

**Bella Coola Grizzly Tours Inc.**

1953 Mackenzie Hwy 20  
PO Box 336  
Bella Coola, BC V0T 1C0  
Tel: (604) 982-0098  
Toll Free: 1-888-982-0098  
Fax: (604) 982-0097  
Email: [info@bcgrizzlytours.com](mailto:info@bcgrizzlytours.com)  
Website: [www.bcgrizzlytours.com](http://www.bcgrizzlytours.com)

**Big Bar Guest Ranch**

PO Box 27  
Clinton, BC V0K 1K0  
Tel: (250) 459-2333  
Toll Free: 1-877-655-2333  
Fax: (250) 459-2400  
Email: [contact@bigbarranch.com](mailto:contact@bigbarranch.com)  
Website: [www.bigbarranch.com](http://www.bigbarranch.com)

**Big Creek Lodge Ltd.**

PO Box 20  
Big Creek, BC V0L1K0  
Tel: (250) 394-4831  
Fax: (250) 394-4831  
Email: [office@bigcreeklodgebc.com](mailto:office@bigcreeklodgebc.com)  
Website: [www.bigcreeklodgebc.com](http://www.bigcreeklodgebc.com)

**Canim Lake Resort & Guide Outfitters**

Box 248  
Canim Lake, BC V0K1J0  
Tel: (250) 397-2355  
Toll Free: 1-877-512-6660  
Fax: (250) 397-2607  
Email: [info@canim.com](mailto:info@canim.com)  
Website: [www.canim.com](http://www.canim.com)

**Cariboo Lodge Resort**

PO Box 459  
Clinton, BC V0K 1K0  
Tel: (250) 459-7992  
Fax: (250) 459-0060  
Email: [cariboo-lodge@goldtrail.com](mailto:cariboo-lodge@goldtrail.com)  
Website:  
<http://www.bcadventure.com/cariboolodge/>

**Cariboo Mountain Outfitters**

PO Box 4010  
Quesnel, BC V2J 2J6  
Toll Free : 1-778-786-0847  
Email: [cmo@lincsat.com](mailto:cmo@lincsat.com)  
Website: [www.cariboomountain.com](http://www.cariboomountain.com)

**Cariboo River Fishing Adventures**

1613 West Fraser Rd.  
Quesnel, BC V2J 5B6  
Tel/Fax: (250) 992-6661  
Toll Free: 1-866-992-6661  
Email: [mooring@uniserve.com](mailto:mooring@uniserve.com)  
Website: [www.caribooriverfishing.com](http://www.caribooriverfishing.com)

**Chilcotin Holidays Guest Ranch**

Gun Creek Road  
Gold Bridge, BC V0K1P0  
Tel: (250) 238-2274  
Fax: (250) 238-2241  
Email: [adventures@chilcotingholidays.com](mailto:adventures@chilcotingholidays.com)  
Website: [www.chilcotingholidays.com](http://www.chilcotingholidays.com)

**Chilko Lake – The Lodge**

7025 Beggs Road.  
Nelson, BC V0L 1V0  
Toll Free/Fax: 1-888-639-1114  
Email: [brian@iroamtheworld.com](mailto:brian@iroamtheworld.com)  
Website: [www.chilkolake.com](http://www.chilkolake.com)

## Other BC Resorts Continued...

---

### Cozy Cabins

PO Box 911  
Lumby, BC V0E 2G0  
Tel/Fax: (250) 547-6201  
E-mail: [info@cozycabins.ca](mailto:info@cozycabins.ca)  
Website: [www.cozycabins.ca](http://www.cozycabins.ca)

### Crooked Lake Resort

PO Box 358  
Horsefly, BC V0L 1L0  
Tel: (403) 987-1307  
Toll Free: 1-866-614-1690  
Email: [info@crookedlakeresort.ca](mailto:info@crookedlakeresort.ca)  
Website: [www.crookedlakeresort.ca](http://www.crookedlakeresort.ca)

### Crystal Waters Guest Ranch

PO Box 100 North Bonaparte Road  
Bridge Lake, BC V0K1E0  
Toll Free: 1-888-593-2252  
Email: [holiday@crystalwatersranch.com](mailto:holiday@crystalwatersranch.com)  
Website: [www.crystalwatersranch.com](http://www.crystalwatersranch.com)

### Dean on Nimpo, The

1145 Hwy 20 West  
PO Box 80  
Nimpo Lake, BC V0L 1R0  
Tel/Fax: (250) 742-3332  
Toll Free: 1-888-646-7655  
Email: [thedean@telus.net](mailto:thedean@telus.net)  
Website: [www.thedeanonnimpo.com](http://www.thedeanonnimpo.com)

### Emerald Lake Lodge

Field, BC V0A1G0  
Tel: (250) 343-6321  
Fax: (250) 343-6724  
Email: [ellmanager@crmr.com](mailto:ellmanager@crmr.com)  
Website: <http://www.crmr.com/emerald-lake-lodge.php>

### Escott Bay Resort

PO Box 3375  
Anahim Lake, BC V0L1C0  
Tel/Fax: (250) 742-3233  
Toll Free: 1-888-380-8802  
Email: [escott@xplornet.com](mailto:escott@xplornet.com)  
Website: [www.escottbay.com](http://www.escottbay.com)

### Fairmont Hot Springs Resort

5225 Fairmont  
Fairmont Hot Springs, BC V0B 1L0  
Tel: (250) 345-6000  
Toll Free: 1-800-663-4979  
E-Mail: [info@fairmonthotsprings.com](mailto:info@fairmonthotsprings.com)  
Website: [www.fairmonthotsprings.com](http://www.fairmonthotsprings.com)

### Frontier Guide Outfitters

PO Box 4554  
Quesnel, BC V2J 3J8  
Tel: (250) 983-2295  
Email: [frontierbc@msn.com](mailto:frontierbc@msn.com)

### Glacier Park Lodge

The Summit  
Rogers Pass, BC  
Tel: (250) 837-2126  
Fax: (250) 837-2130  
Email: [innkeeper@glacierparklodge.ca](mailto:innkeeper@glacierparklodge.ca)  
Website: [www.glacierparklodge.ca](http://www.glacierparklodge.ca)

### Helmcken Falls Lodge

PO Box 239  
Clearwater, BC V0E 1N0  
Tel: (250) 674-3657  
Fax: (250) 674-2971  
Email: [info@helmckenfalls.com](mailto:info@helmckenfalls.com)  
Website: [www.helmckenfalls.com](http://www.helmckenfalls.com)

### Highland Cream Resort

Gold Bridge, BC V0K 1P0  
Tel/Fax: (250) 238-2362  
Email: [chalet@highlandcreamresort.com](mailto:chalet@highlandcreamresort.com)  
Website: [www.highlandcreamresort.com](http://www.highlandcreamresort.com)

### Highland House Bed and Breakfast Inn

Tunkwa Lake Road  
PO Box 792  
Logan Lake, BC V0K 1W0  
Tel: (250) 523-2766  
Email: [info@highlandhouse.ca](mailto:info@highlandhouse.ca)  
Website: [www.highlandhouse.ca](http://www.highlandhouse.ca)

## Other BC Resorts Continued...

---

### Howdy's Lakeside Resort

PO Box 39  
Chilanko Forks, BC V0L 1H0  
Tel: (250) 481-0013  
Toll Free: 1-800-578-6804  
Fax: (250) 481-0053  
Email: [info@howdysresort.com](mailto:info@howdysresort.com)  
Website: [www.howdysresort.com](http://www.howdysresort.com)

### Jandana Ranch

General Delivery  
Pinantan Lake, BC V0E 3E0  
Tel: (250) 573-5800  
Fax: (250) 573-5820  
Toll Free: 1-800-573-5881  
Email: [info@jandanaranch.com](mailto:info@jandanaranch.com)  
Website: [www.jandanaranch.com](http://www.jandanaranch.com)

### Truffle Pigs Bistro & Kicking Horse Lodge

PO Box 174  
Field, BC V0A 1G0  
Tel: (250) 343-6303  
Toll free: 1-800-659-4944  
Fax: (250) 343-6462  
Email: [oink@trufflepigs.com](mailto:oink@trufflepigs.com)  
Website: [www.trufflepigs.com](http://www.trufflepigs.com)

### Kokanee Bay Fishing Resort

3904 Puntzi Lake Road  
Chilanko Forks, BC V0L1H0  
Tel (250) 481-1130  
Email: [kokanneebay@gmail.com](mailto:kokanneebay@gmail.com)  
Website:  
[www.kokanneebayfishingresort.com](http://www.kokanneebayfishingresort.com)

### Kokanee Bay Motel & Trailer Court

3728 Hwy 97  
Lac La Hache, BC V0K 1T1  
Tel: (250) 396-7345  
Toll Free : 1-888-399-7345  
Fax: (250) 396-4990  
Email: [info@kokanneebaycariboo.com](mailto:info@kokanneebaycariboo.com)  
Website: [www.kokanneebaycariboo.com](http://www.kokanneebaycariboo.com)

### Lac Des Roches Resort

C19 Cottonwood Site, R.R. #1  
Lone Butte, BC V0K 1X0  
Tel/Fax: (250) 593-4141  
Email: [info@lacadesroches.com](mailto:info@lacadesroches.com)  
Website: [www.lacadesroches.com](http://www.lacadesroches.com)

### Logan Lake Lodge

PO Box 1190  
111 Chartrand Ave.  
Logan Lake, BC V0K 1W0  
Tel: (250) 523-9466  
Fax: (250) 523-9465  
Email: [fun@loganlake.com](mailto:fun@loganlake.com)  
Website: [www.loganlake.com](http://www.loganlake.com)

### Manning Park Resort

21-46244 Airport Road  
Chilliwack, BC V2P 1A5  
Location Address: 7500 Highway #3  
Manning Provincial Park, BC  
Tel: (250) 840-8822  
Fax: (250) 840-8848  
Email:  
[human.resouraces@manningpark.com](mailto:human.resouraces@manningpark.com)  
Website: [www.manningpark.com](http://www.manningpark.com)

### Meadow Springs Ranch

Site A, C-19, RR#1  
70 Mile House, BC V0K2K0  
Tel: (250) 456-2425  
Fax: (250) 456-2429  
Email: [msprings@bcinternet.net](mailto:msprings@bcinternet.net)  
Website: [www.meadowsprings.com](http://www.meadowsprings.com)

### Montana Lake Resort Ltd.

PO Box 184  
Mchette Lake Road  
Bridge Lake, BC V0K 1E0  
Tel/Fax: (250) 593-4160  
Email: [montana.lake.resort@telus.net](mailto:montana.lake.resort@telus.net)  
Website:  
<http://www.bcadventure.com/montanalakeresort>

## Other BC Resorts Continued...

---

### **Morrow Chalets**

General Delivery  
Gold Bridge, BC V0K 1P0  
Tel/Fax: (250) 238-2462  
Email: [rentals@morrowchalets.com](mailto:rentals@morrowchalets.com)  
Website: [www.morrowchalets.com](http://www.morrowchalets.com)

### **Nipika**

RR #3, 4968 Timbervale Place  
Invermere, BC V0A 1K3  
Tel: (250) 342-6516  
Toll Free: 1-877-647-4525  
Fax: (250) 342-0516  
E-mail: [info@nipika.com](mailto:info@nipika.com)  
Website: <http://www.nipika.com>

### **Northwood Lodge & Resort**

PO Box 99  
Lac La Hache, BC V0K 1T0  
Tel: (250) 396-7311  
Fax: (250) 396-7366  
Email: [info@northwoodlodge.com](mailto:info@northwoodlodge.com)  
Website: [www.northwoodlodge.com](http://www.northwoodlodge.com)

### **Pinantan Lake Family Resort**

2488 Harper Ranch Road  
Pinantan Lake, BC V0E 3E1  
Tel: (250) 573-3534  
Toll Free: 1-866-882-8826  
Email: [pinantanlake@lakecable.tv](mailto:pinantanlake@lakecable.tv)  
Website: [www.pinantanlake.bc.ca](http://www.pinantanlake.bc.ca)

### **Ponderosa Resort**

PO Box 32  
Canim Lake, BC V0K1J0  
Tel/Fax: (250) 397-2243  
Email: [ponderosa@bcinternet.net](mailto:ponderosa@bcinternet.net)  
Website: [www.ponderosaresort.com](http://www.ponderosaresort.com)

### **Postill Lake Lodge**

11950 Postill Lake Rd.  
Kelowna, BC V1P 1A2  
Tel: (250) 212-0579  
Toll Free: 1-877-623-6982  
Email: [postilllake@xplornet.com](mailto:postilllake@xplornet.com)  
Website: [www.postilllake.com](http://www.postilllake.com)

### **Princeton Castle Resort**

375 Rainbow Lake Road  
R.R.1, S1, C10  
Princeton, BC V0X 1W0  
Tel: (250) 295-7988  
Fax: (250) 295-7208  
Email: [info@castleresort.com](mailto:info@castleresort.com)  
Website: [www.castleresort.com](http://www.castleresort.com)

### **Puntzi Lake Resort**

PO Box 65  
Chilanko Forks, BC V0L1H0  
Tel/Fax: (250) 481-1176  
Email: [info@puntzilake.com](mailto:info@puntzilake.com)  
Website: [www.puntzilake.com](http://www.puntzilake.com)

### **Purcell Mountain Lodge**

PO Box 1829  
Golden, BC V0A 1H0  
Tel: (250) 344-2639  
Fax: (250) 344-5520  
Website:  
<http://www.purcellmountainlodge.com>

### **Quesnel Lake B&B**

6157 Cedar Creek Road  
PO Box 45  
Likely, BC V0L1N0  
Tel: (250) 790-2446  
Or (250) 305-5090

### **Radium Hot Springs Lodge**

PO Box 70  
Radium Hot Springs, BC V0A 1M0  
Tel: (250) 347-9341  
Toll Free: 1-888-222-9341  
Fax: (250) 347-9342  
Email: [rockieshotspot@telus.net](mailto:rockieshotspot@telus.net)  
Website:  
[www.radiumhotspringslodge.com](http://www.radiumhotspringslodge.com)

### **108 Resort & Conference Centre**

PO Box 2  
4816 Telqua Drive  
108 Mile Ranch, BC V0K 2Z0  
Tel: (250) 791-5211  
Toll free: 1-800-667-5233  
Fax: (250) 791-6537

## Other BC Resorts Continued...

---

### Rock Island Lake Fishing Camp

3130 Pine Valley Road,  
Williams Lake, BC V2G 5C3  
Tel/Fax: (250) 989-1166  
E-Mail: [rockislandlake@shaw.ca](mailto:rockislandlake@shaw.ca)  
Website:  
[www.rockislandfishingcamp.com](http://www.rockislandfishingcamp.com)

### Sheridan Lake Resort

C-10, RR 1, Sheridan Store Site  
Lone Butte, BC V0K1X0  
Tel: (250) 593-4611  
Fax: (250) 593-4618  
Email: [fish@sheridanlakeresort.com](mailto:fish@sheridanlakeresort.com)  
Website: [www.sheridanlakeresort.com](http://www.sheridanlakeresort.com)

### Silverton Resort

PO Box 107  
Silverton, B.C. V0G 2B0  
Tel: (250) 358-7157  
Email: [silvertonresort@netidea.com](mailto:silvertonresort@netidea.com)  
Website: [www.silvertonresort.com](http://www.silvertonresort.com)

### Siwash Lake Ranch

PO Box 39  
70 Mile House, BC V0K 2K0  
Tel: (250) 395-6541  
Email: [info@siwashlakeranch.com](mailto:info@siwashlakeranch.com)  
Website: [siwashlakeranch.com](http://siwashlakeranch.com)

### Spring Lake Ranch

PO Box 880  
100 Mile House, BC V0K 2E0  
Tel: 250-791-5776  
Toll Free: 1-877-791-5776  
Fax: 250-791-5771  
Email: [info@springlakeranch.com](mailto:info@springlakeranch.com)  
Website: [www.springlakeranch.com](http://www.springlakeranch.com)

### Spruce Wilderness Lodge

PO Box 119  
Bonaparte Lake, BC V2C 5K9  
Tel: (250) 706-9111  
Fax: (604) 462-9948  
Email: [sprucewilderness@hotmail.com](mailto:sprucewilderness@hotmail.com)  
Website: [www.sprucewildernesslodge.ca](http://www.sprucewildernesslodge.ca)

### Ten-ee-ah Lodge

PO Box 157  
Lac La Hache, BC V0K 1T0  
Tel: (250) 434-9745  
Toll Free: 1-866-860-7899  
Email: [info@ten-ee-ah.bc.ca](mailto:info@ten-ee-ah.bc.ca)  
Website: [www.ten-ee-ah.bc.ca](http://www.ten-ee-ah.bc.ca)

### Tyax Mountain Lake Resort

Tyaughton Lake Road,  
Gold Bridge, BC V0K 1P0  
Tel: (250) 238-2221  
Toll Free: 1-877-918-8929  
Fax: (250) 238-2528  
Email: [info@tyax.com](mailto:info@tyax.com)  
Website: [www.tyax.com](http://www.tyax.com)

### Valkyr Adventures

PO Box 20  
Fauquier, BC V0G 1K0  
Tel/Fax: (250) 269-7237  
Toll Free: 1-888-482-5597  
E-mail: [info@valkyradventures.com](mailto:info@valkyradventures.com)  
Website: [www.valkyradventures.com](http://www.valkyradventures.com)

### Wells Gray Backcountry Chalets & Wilderness Adventures

PO Box 188  
Clearwater, BC V0E 1N0  
Tel: (250) 587-6444  
Toll Free: 1-888-754-8735  
Email: [info@skihike.com](mailto:info@skihike.com)  
Website: [www.skihike.com](http://www.skihike.com)

### Wells Gray Guest Ranch

PO Box 1764, RR 1  
Clearwater, BC V0E 1N0  
Tel: (250) 674-2792  
Toll Free: 1-866-467-4346  
Fax: (250) 674-0215  
Email: [reservation@wellsgrayranch.com](mailto:reservation@wellsgrayranch.com)  
Website: [www.wellsgrayranch.com](http://www.wellsgrayranch.com)

## Other BC Resorts Continued...

---

### **Wells Hotel**

PO Box 39  
Wells, BC, BC V0K 2R0  
Tel: (250) 994-3427  
Toll Free: 1-800-860-2299  
Fax: (250) 994-3494  
Email: [whotel@goldcity.net](mailto:whotel@goldcity.net)  
Website: [www.wellshotel.com](http://www.wellshotel.com)

### **Whitewater Ski and Winter Resort**

573 Victoria St.  
Nelson, BC V1L 4K7  
Tel: (250) 354-4944  
Toll Free: 1-800-666-9420  
Fax: (250) 354-4988  
E-mail: [info@skiwhitewater.com](mailto:info@skiwhitewater.com)  
Website: [www.skiwhitewater.com](http://www.skiwhitewater.com)

### **Whitegold Adventures**

PO Box 206  
Wells, BC V0K 2R0  
Tel: (250) 994-2345  
Toll Free: 1-866-994-2345  
Fax: (250) 994-2347  
Email: [adventure@whitegold.ca](mailto:adventure@whitegold.ca)  
Website: [www.whitegold.ca](http://www.whitegold.ca)

## BC Cross Country Ski Clubs

---

A listing of clubs can be found at the following websites:

[www.out-there.com/htl\\_xcs.htm](http://www.out-there.com/htl_xcs.htm)

[www.canadatrails.ca/xc\\_ski/xcclbc.html](http://www.canadatrails.ca/xc_ski/xcclbc.html)

Based on some initial research, there are few jobs available through the clubs as most trails/services are operated by volunteers. The “paid” positions that do become available to the public (ticket booth operation, and instructors/coaches) are advertised as need arises.





# RETAIL



**A compilation organized  
by TQM Consulting in association with  
the Kamloops Work Search Centres**

**© October 2010**

## Introduction to Retail

Retailing is a cornerstone of the provincial economy. According to Retail BC<sup>7</sup>, retailing represents over \$50 billion dollars worth of economic activity and involves more than 30,000 enterprises. These businesses are major job creators providing pay cheques for over 250,000 British Columbians.

In this section, you will find information on the prospects for the retail industry, planning a career in this industry, and finding work in the retail industry.

## Career Planning Information

### Job Outlook

According to the BC Labour Market Report of August 2007, retail continues to boom in British Columbia with no signs of slowing down. The Credit Union Central of BC predicts the upward trend will continue, rising 6.3% in 2007 and 6.7% in 2008. This will be reflected in employment opportunities. BC Jobs says that the chances of finding work as a retail salesperson or sales associate are excellent. These occupations are expected to increase in BC by 13.1% between 2000 and 2010 (Industry Canada, Industry Employment by occupation).

### Types of Careers

Retailing offers many opportunities for ambitious and hardworking employees. A retail career often begins with a sales associate position. Dedication and commitment will open up your career path options to positions that include assistant manager, manager, merchandiser, buyer, district manager, human resources, distribution and inventory control, and public relation positions.

Retail sales associates sell or rent a range of goods and services in stores and other retail businesses and in wholesale businesses that sell on a retail basis to the general public. They greet customers and discuss the type, quality and quantity of merchandise sought for purchase or rental. They advise customers on use and care of merchandise, and they estimate or quote prices, credit terms, trade-in allowances, warranties and delivery dates. They also prepare sales contracts and merchandise for purchase or rental, they accept cash, cheque, credit card or automatic debit payment, and they assist in the display of merchandise.

---

<sup>7</sup> [www.retailbc.org](http://www.retailbc.org)

## Education & Training

---

Entry-level retail sales positions normally require some high school education. Experience in sales or in an occupation related to the product is also normally needed. In smaller operations, a manager or owner will likely train recently hired employees on job duties. In larger operations, in-house training programs normally take place over several days. Advancement to supervisory positions usually requires additional training and/or experience.



Demonstrated sales ability and product knowledge are usually required for those who sell complex or valuable merchandise, such as automobiles, antiques or computers. Those most likely to succeed as retail sales people will have basic math skills, strong oral communication skills, a neat appearance and diplomacy for dealing with a wide range of customers. A second language can be an asset, as well as FoodSafe and Level 1 First Aid Certificates.

## Working Conditions

---

**Sales associates** must answer various inquiries about the products or services of the establishments for which they work. They are often either in direct contact with customers or in close proximity to them. Sales staff should be prepared to work some evenings and weekends. Even though some technical skills to operate point of sale systems or cash registers are usually involved in the job, there is a higher value placed on enthusiasm and a good work ethic than on technological skills.

## Wage

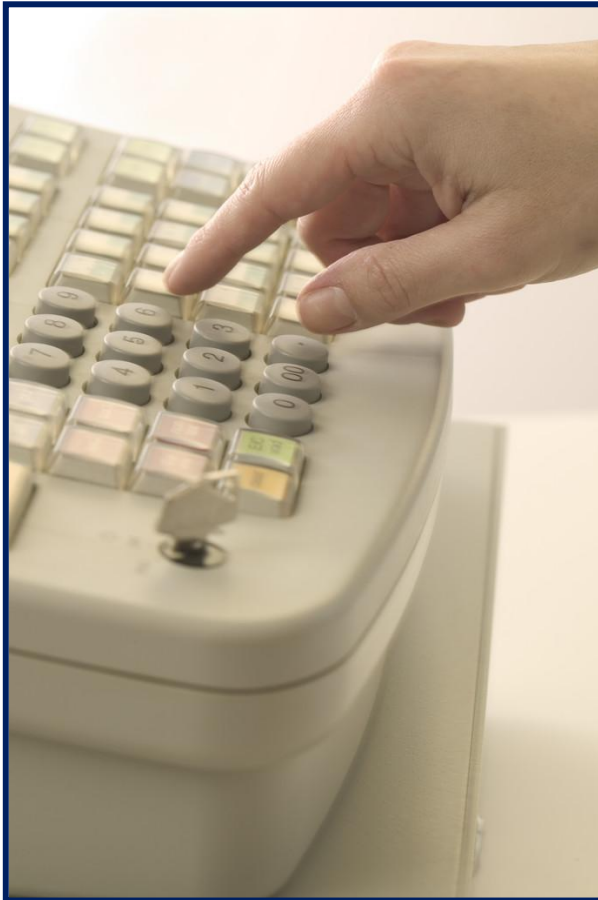
---

The average wage received for seasonal employment is from \$8.00 - \$12.00 depending on experience and skills. In addition to your hourly wages, many retail employers offer competitive benefits packages that include medical and dental plans, discounts on merchandise purchases or bonuses. Some retail positions may be partly commission based too, increasing the opportunity to earn more based on your sales performance.

## Website Resources

BC Jobs  
Canadian Retail Listings  
Canadian Tire  
Future Shop Careers  
Home Depot  
Hudson's Bay Company  
London Drugs  
Monster  
Office Depot  
Sears Canada  
The Brick  
The Job Stores  
Workopolis

[www.bcjobs.net](http://www.bcjobs.net)  
[www.canadianretail.com](http://www.canadianretail.com)  
[www.canadiantire.ca](http://www.canadiantire.ca)  
[www.futureshop.ca](http://www.futureshop.ca)  
[www.homedepot.ca](http://www.homedepot.ca)  
[www.hbc.com/hbc/careers/why](http://www.hbc.com/hbc/careers/why)  
[www.londondrugs.com](http://www.londondrugs.com)  
[www.monster.ca](http://www.monster.ca)  
[www.officedepot.ca](http://www.officedepot.ca)  
[www.sears.ca](http://www.sears.ca)  
[www.thebrick.com](http://www.thebrick.com)  
[www.thejobstores.com](http://www.thejobstores.com)  
[www.workopolis.ca](http://www.workopolis.ca)



## Quick Work Search Tips

The information in this subsection is compiled from a recent survey of Kamloops employers, who were asked to provide valuable feedback on local hiring practices.

### How to Apply

---

- Unsolicited resumes are accepted and many will require that an application be filled out as well.
- Past seasonal employees will be re-considered and resumes left on file. This is a good justification to do a follow up call.

### Peak Hiring Time

---

- Seasonal employment begins between the months of September to the beginning of January. Please keep in mind there is always room for advancement when applying for seasonal employment, which may turn into year round employment.

### Prepare to Get Hired

---

- Listing two to three references on your resume is a must. Be sure to confirm with your references that they are being used.
- Kamloops employers look for an upbeat, positive, and outgoing attitude to best deal with the seasonal rush and sometimes stressful season.
- When applying for a seasonal position, be specific in your job objective in your resume about the position that you are applying for.
- If a work ethic has been applied there is an opportunity for part-time or a continuation of employment after the season.

## Retail Employer Contacts

### Aberdeen Mall

#### Aberdeen Mall

1320 West Trans Canada Hwy.  
Kamloops, BC V2S 1J2  
Tel: (250) 374-3400  
Fax: (250) 377-4081  
Website: [www.aberdeenmall.ca](http://www.aberdeenmall.ca)  
Email:  
[aberdeenmall@oxfordproperties.com](mailto:aberdeenmall@oxfordproperties.com)

#### A & W

Tel: (250) 374-3438  
Fax: (250) 376-5744  
Website: [www.aw.ca](http://www.aw.ca)

#### Aberdeen Lottery Ticket Centre

Tel: (250) 828-2721

#### Aberdeen X-Ray Clinic

Tel: (250) 372-1145

#### Administration

Tel: (250) 374-3400

#### Aldo Shoes

Tel: (250) 851-0002  
Website: [www.alsoshoes.com](http://www.alsoshoes.com)

#### Ann-Louise Jewellers

Tel: (250) 372-5810  
Website: [www.annlouise.ca](http://www.annlouise.ca)

#### Aqua

Tel: (250) 372-9187

#### Arby's

Website: <http://www.arbys.com>

#### Ardene

Tel: (250) 377-3431  
Website: [www.ardene.com](http://www.ardene.com)

#### Barton Insurance

Tel: (250) 372-1380  
Website: [www.barton.ca](http://www.barton.ca)

#### Bath & Body Works

Tel: (250) 374-1184  
Website:  
[www.bathandbodyworks.com](http://www.bathandbodyworks.com)

#### Bead Connection

Tel: (250) 372-1300

#### Bell World

Tel: (250) 374-0137  
Website: [www.bell.ca](http://www.bell.ca)

#### Below the Belt

Tel: (250) 374-4880

#### Bentley Leathers & Luggage

Tel: (250) 314-0383  
Website: [www.shopbentley.com](http://www.shopbentley.com)

#### Booster Juice

Tel: (250) 374-7721  
Fax: (250) 374-7701  
Website: [www.boosterjuice.com](http://www.boosterjuice.com)

#### Bootlegger

Tel: (250) 374-5049  
Fax: (250) 372-5263  
Website: [www.bootlegger.com](http://www.bootlegger.com)

#### Boutique of Leather

Tel: (250) 374-8880  
Website: [www.boutiqueofleather.com](http://www.boutiqueofleather.com)

#### Canadian Lensmakers

Tel: (250) 372-0552

#### Carlton Cards

Tel: (250) 372-5451  
Website: [www.carltoncards.com](http://www.carltoncards.com)

#### Cineplex Odeon

Tel: (250) 377-8401  
Website: [www.cineplex.com](http://www.cineplex.com)

**Claire's Boutique**

Tel: (250) 851-8706  
Website: [www.clares.com](http://www.clares.com)

**Cleo**

Tel: (250) 374-5366  
Fax: (250) 851-0554  
Website: [www.cleo.ca](http://www.cleo.ca)

**Coles Books**

Tel: (250) 372-2249  
Website: [www.chapters.indigo.ca](http://www.chapters.indigo.ca)

**Dolson's Source for Sports**

Tel: (250) 372-5531

**East Side Mario's**

Tel: (250) 374-7174  
Fax: (250) 374-7181  
Website:  
[www.primerestaurants.com/eastside\\_marios](http://www.primerestaurants.com/eastside_marios)

**Extreme Pita**

Tel: (250) 314-9996

**Footlocker**

Tel: (250) 374-3517  
Website: [www.footlocker.com](http://www.footlocker.com)

**Future Shop**

Tel: (250) 374-7554  
Website: [www.futureshop.ca](http://www.futureshop.ca)

**Garage**

Tel: (250) 372-1833  
Website: [www.garage.ca](http://www.garage.ca)

**GNC**

Tel: (250) 314-0304  
Website: [www.gnc.com](http://www.gnc.com)

**Guest Services**

Tel: (250) 374-3400

**House of Knives**

Tel: (250) 377-3717  
Website: [www.houseofknives.ca](http://www.houseofknives.ca)

**Jersey City**

Tel: (250) 828-0378  
Website: [www.jerseycity.ca](http://www.jerseycity.ca)

**Koodo**

Tel: (250) 377-3375

**La Senza**

Tel: (250) 851-0525  
Website: [www.lasenza.com](http://www.lasenza.com)

**La Vie en Rose**

(250) 374-9187  
Website: [www.lavieenrose.com](http://www.lavieenrose.com)

**Le Chateau**

Tel: (250) 372-5171  
Website: [www.lechateau.com](http://www.lechateau.com)

**Lulu Spalon**

Tel : (250) 372-8721

**Mappins**

(250) 374-3030  
Website: [www.mappinsjewellers.com](http://www.mappinsjewellers.com)

**Marquise**

Tel: (250) 374-3400  
[www.marquise.ca](http://www.marquise.ca)

**Master Cuts**

Tel: (250) 372-9696  
Website: [www.mastercuts.com](http://www.mastercuts.com)

**McBean's Coffee**

Tel: (250) 372-7340

**Merle Norman**

Tel: (250) 374-4047  
Website: [www.merlenorman.com](http://www.merlenorman.com)

**Metalsmiths**

Tel: (250) 314-1835  
Website: [www.metalsmiths.ca](http://www.metalsmiths.ca)

**Murdawg**

Tel: (250) 377-0991

**New York Fries**

Tel: (250) 851-2122  
Website: [www.newyorkfries.com](http://www.newyorkfries.com)

**Northern Reflections**

Tel: (250)314-1457

**Off the Wall**

Tel: (250) 372-3549  
Website: [www.offthewallclothing.com](http://www.offthewallclothing.com)

**Orange Julius**

Tel: (250) 374-5654  
Website: [www.orangejulius.com](http://www.orangejulius.com)

**Origami**

Tel: (250) 374-3283

**Payless Shoe Source**

Tel: (250) 314-6951  
Website: [www.payless.com](http://www.payless.com)

**Peoples Jewelers**

Tel: (250) 372-7422  
Website: [www.peoplesjewellers.com](http://www.peoplesjewellers.com)

**Please Mum**

Tel: (250) 374-4907  
Website: [www.pleasemum.com](http://www.pleasemum.com)

**ProSystems/Glamour Secrets**

Tel: (250) 314-9858

**Purdy's Chocolates**

Tel: (250) 377-8641  
Website: [www.purdys.com](http://www.purdys.com)

**Quilts Etc.**

Tel: (250) 374-0060  
Website: [www.quiltsetc.com](http://www.quiltsetc.com)

**Ricki's**

Tel: (250) 374-8512  
Website: [www.rickis.com](http://www.rickis.com)

**Rogers Wireless**

Tel: (250) 372-5521  
Website: [www.cellcomwireless.com](http://www.cellcomwireless.com)

**Roots Canada**

Tel: (250) 374-7442  
Website: [www.roots.com](http://www.roots.com)

**Royal LePage Realty**

Tel: (250) 374-3022

**Sears Canada**

Tel: (250) 374-6611  
Website: [www.sears.ca](http://www.sears.ca)

**Security**

Tel: (250) 819-7911

**Sizzling Wok**

Tel: (250) 571-1088

**Smart Set**

Tel: (250) 374-2128  
Website: [www.smart-set.com](http://www.smart-set.com)

**Soft Moc**

Tel: (250) 314-740  
Website: [www.softmoc.com](http://www.softmoc.com)

**Sport Chek / Atmosphere**

Tel: (250) 314-1602  
Website: [www.sportchek.ca](http://www.sportchek.ca)

**Stitches**

[www.stitches.ca](http://www.stitches.ca)

**Subway**

Tel: (250) 377-7255

Website: [www.subway.com](http://www.subway.com)

**Suzy Shier**

Tel: (250) 851-0677

Website: [www.suzyshier.com](http://www.suzyshier.com)

**Tabi**

Tel: (250) 851-8807

Website: [www.tabi.ca](http://www.tabi.ca)

**Taco Time**

Tel: (250) 372-1149

Website: [www.tacotime.com](http://www.tacotime.com)

**Tan Jay / Alia**

Tel: (250) 851-9200

Website: [www.nygard.com](http://www.nygard.com)

**Telus Mobility**

Tel: (250) 377-8880

Website: [www.telusmobility.com](http://www.telusmobility.com)

**The Bay**

Tel: (250) 372-8271

Website: [www.hbc.com/bay](http://www.hbc.com/bay)

**The Body Shop**

Tel: (250) 372-5560

Website: [www.thebodyshop.com](http://www.thebodyshop.com)

**The Children's Place**

Tel: (250) 372-8983

**The Source by Circuit City**

Tel: (250) 372-3708

Website: [www.thesourcecc.com](http://www.thesourcecc.com)

**Things Engraved**

Tel: (250) 374-2121

**Thrifty's**

Tel: (250) 374-7140

Website: [www.bluenotesjeans.com](http://www.bluenotesjeans.com)

**Uniglobe Travel**

Tel: (250) 372-0544

Website: [www.funtravel.com](http://www.funtravel.com)

**Virgin Mobile**

Tel: (250) 314-4534

Website: [www.virginmobile.ca](http://www.virginmobile.ca)

**West 49**

Tel: (250) 374-0616

Website: [www.west49.com](http://www.west49.com)

**Whiteway Cleaners**

Tel: (250) 374-4414

**Wireless Wave**

Tel: (250) 372-1868

Website: [www.wirelesswave.ca](http://www.wirelesswave.ca)



## **More Kamloops Shopping Malls**

---

### **Aberdeen Village Centre**

1395 Hillside Drive  
Kamloops, BC  
Tel: (250) 377-3032

### **Brock Shopping Centre**

1800 Tranquille Road  
Kamloops, BC  
Tel: 376-3924

### **Columbia Place Shopping Centre**

230 – 1210 Summit Drive  
Kamloops, BC  
Tel: (250) 372-5878

### **Lansdowne Village**

92 – 450 Lansdowne Street  
Kamloops, BC V2C 1Y3  
Tel: (250) 372-5225

### **Northhills Shopping Centre**

34A – 700 Tranquille Road  
Kamloops, BC V2B 3H9  
Tel: (250) 376-1259  
Fax: (250) 554-3761  
E-mail: [spartko@shaw.ca](mailto:spartko@shaw.ca)

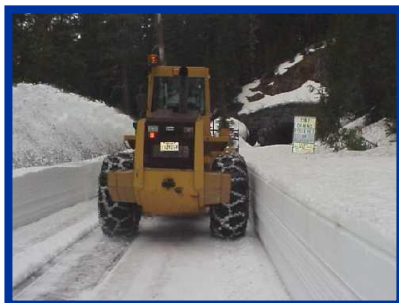
### **Sahali Centre Mall**

22 – 945 Columbia Street West  
Kamloops, BC V2C 1L5  
Tel: (250) 374-3033  
Fax: (250) 374-7322

### **Summit Shopping Centre**

103B - 1180 Columbia Street  
Kamloops, BC  
Tel: (250) 377-3768

# SNOW REMOVAL



A compilation organized  
by TQM Consulting in association with  
the Kamloops Work Search Centres

© October 2010

## Career Planning

The information below has been gathered by speaking directly with several employers in the Kamloops area.<sup>8</sup> This information is to be used as a guide only.

### Job Outlook

---

This type of work falls under several categories depending on the extent the removal requires. **Janitors, Caretakers and Building Superintendents** clear snow and ice from walkways and parking areas from buildings they take care of. This occupational group is very large and will see many additional openings due to worker turnover and retirements. **Heavy Equipment Operators** (sand & push trucks etc.), is also a very large group. Over 2/3 of these openings will be due to retirements with the remainder due to new positions.

### Description of Positions

---

Entry level positions include:

- **Snow Shovelling** - Shovelling snow from commercial sidewalks, walkways, and residential driveways and walkways.
- **Loader Operators / Sand Truck Drivers / Push Truck Drivers** - Run the heavy equipment to clear and prepare roads, parking lots, and all major traffic areas.

With both of the above positions, employees should note:

- Reliable transportation is a must.
- The work is usually on call 24 hours a day and depends on snow fall.
- Companies provide the necessary equipment.

### Wages

---

Snow Shovelling – Minimum wage

<sup>9</sup>Loader Operators/ Sand Truck Drivers / Push Truck Drivers - The average earnings for Heavy Equipment Operators is \$ \$55,100 per year or \$14.00 - \$27.00 per hour.

### Working Conditions

---

A Snow-Removal Operator may start clearing the streets at 3:00 am and work until the snow has been cleared. They may expect to work in snowy and possible icy conditions depending on the snow fall.

---

<sup>8</sup> D. Dillman Enterprises Ltd., KRM Contracting, Antonio's Curbing and Landscaping, City Power Sweeping, Vanguard Development Corp.

<sup>9</sup> BC Work Futures – [www.workfutures.bc.ca](http://www.workfutures.bc.ca) (Accessed October 2010)

## Education / Training

---

### Snow Shovelling

No education / training required though physical fitness and endurance is an asset.

### Loader Operators / Sand Truck Drivers / Push Truck Drivers

Depending on the type of machinery needed, the education and training varies. If you wanted to work for public works at the City of Kamloops, you will need specific heavy equipment operator certification and credentials. If you wanted to work for a private company running a small push truck then you won't need specific certification other than a valid driver's license and on-the-job training from an expert.

## Hiring Practices

---

Snow Removal companies tend to re-hire employees that were laid-off in the fall, after summer contracts are over, before they will hire new employees. Companies with larger contracts will hire based on need. Helpful hints to remember:

- All shifts are on call 24 hours.
- If there is a substantial amount of snowfall, the larger companies will move into rotating shifts.

It is important to note that many Kamloops contractors are not solely snow removal companies, many of them are landscaping and labour contractors who work beyond the winter season.



## Employer Contacts

The following list has been compiled from the **Yellow Pages** under “**Snow Removal Services**” and [www.superpages.ca](http://www.superpages.ca). This list should be considered as a starting point for your research. Some of the information may have changed since printing.

### Kamloops Snow Removal Companies

#### **Aim Bobcat Services**

835 Regent Crescent  
Kamloops, BC  
Tel: (250) 374-5556

#### **D. Dillman Enterprises Ltd.**

1109 Chief Louis Way  
Kamloops, BC V2H 1J8  
Tel: (250) 372-7569

#### **Erlandson Backhoe & Excavating**

Tel: (250) 319-5175

#### **Frolek Fencing & Contracting**

1068 Qualicum Place  
Kamloops, BC  
Tel: (250) 554-8035  
Cell: (250) 319-4386  
Website: [www.frolekfencing.com](http://www.frolekfencing.com)

#### **Groundlevel**

Tel: (250) 376-1973

#### **High Impact Contracting**

Kamloops, BC V2E 1M4  
Tel: (250) 318-0914  
Email: [highimpact@telus.net](mailto:highimpact@telus.net)

#### **KRM Contracting**

429 Mt. Paul Way  
Kamloops, BC V2H 1A7  
Tel: (250) 374-4437  
Fax: (250) 374-4447  
Email: [mirna@shawlinks.ca](mailto:mirna@shawlinks.ca)  
Website: [www.krm.ca](http://www.krm.ca)

#### **Level Action Landscaping**

1887 Ord Rd  
Kamloops, BC V2B 7V5  
Tel: (250) 376-5263  
Fax: (250) 376-5263  
Email: [gary@levelaction.com](mailto:gary@levelaction.com)

#### **Look Out Landscaping**

302 Hawthorne Street  
Kamloops, BC V2B 2H5  
Tel: (250) 376-2689

#### **Lyons Landscaping Ltd.**

1271B Salish Road  
Kamloops, BC  
Tel: (250) 374-6942  
Fax: (250) 374-6932  
Website: [www.lyonslandscaping.com](http://www.lyonslandscaping.com)

#### **Stobbe Excavating**

1275 Simms Road  
Kamloops, BC  
Tel: (250) 857-0011

#### **Westsyde Road Materials Ltd.**

Kamloops, BC V2C 6B8  
Tel: (250) 372-0505  
Fax: (250) 579-3327  
Website: [www.krm.ca](http://www.krm.ca)