



SOCIAL SERVICES

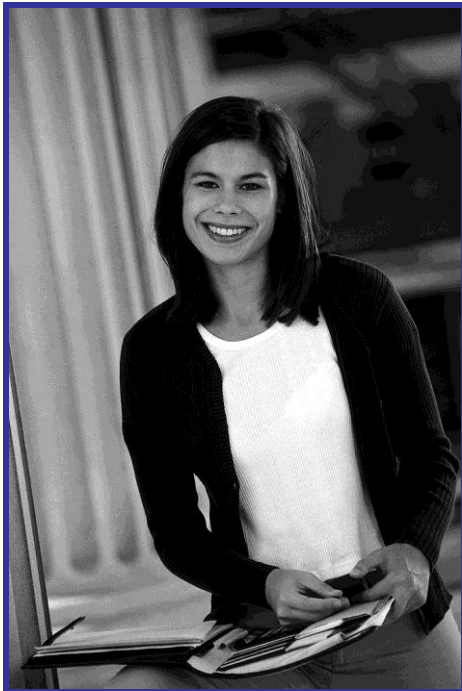


- **Introduction to Social Services**
 - Main Duties
 - Did You Know?
- **Career Planning Information**
 - Job Outlook & Local Employment Potential Info.
 - Types of Careers/Titles
 - Working Conditions
 - Wages
 - Skills and Qualifications
- **Education & Training**
- **Internet Resources**
- **Employer Contact Information**

A compilation organized
by TQM Consulting in association with
the Kamloops Work Search Centres
© November 2010

Table of Contents

Introduction to Social Services.....	3
Main Duties.....	3
Did You Know?.....	4
Career Planning Information.....	5
Job Outlook & Local Employment Potential Information.....	5
Types of Careers/ Titles.....	8
Working Conditions.....	9
Wages.....	9
Skills and Qualifications.....	10
Education & Training.....	12
Internet Resources.....	18
Employer Contact Information.....	19



Introduction to Social Services¹

Social Service Workers assist a variety of client groups. Social Service Workers may work with individuals, couples, families, groups, youth, communities, or organizations. They help people in every stage of life, from children to elderly, to realize their potential and enjoy full, active and creative lives. The objective of a social service worker is to help clients develop the skills and resources needed to improve social functioning. Social Service Workers may work towards this objective through counseling and therapy, by providing advocacy, developing community service plans, or working as a referral agent to other social agencies. Social Service Workers also respond to other social needs such as unemployment, discrimination, racism, and poverty.



Social Service Workers must be able to communicate and connect with a wide variety of client groups. The ability to convey empathy, mediate and negotiate is considered an essential skill.

Main Duties of a Community / Social Service Worker²

Community and social service workers perform some or all of the following duties:

- Interview clients to obtain case history and background information
- Assess client's relevant skill strengths and deficits
- Assist clients to sort out options and develop plans of action while providing necessary support and assistance
- Assist clients in locating and utilizing community resources including legal, medical, financial assistance, housing, employment, transportation, assistance with moves, day care and other referral services
- Prepare intake reports
- Counsel clients living in group homes and half-way houses, supervise their activities and assist in pre-release and release planning.
- Participate in the selection and admission of clients to appropriate programs
- Assess and investigate eligibility for social benefits
- Meet with clients to assess their progress, give support and discuss any difficulties or problems

¹ This section includes information taken from BC Association of Social Work (www.bcasw.org), and Work Futures (www.workfutures.bc.ca/). Accessed November 2010.

²This section includes information taken from Labour Market Information (www.labourmarketinformation). Accessed November 2010.

Main Duties of a Community / Social Service Worker Continued

- Refer clients to other social services
- Advise and aid recipients of social assistance and pensions
- Provide crisis intervention and emergency shelter services
- Implement and organize the delivery of specific services within the community
- Implement life skills workshops, substance abuse treatment programs, behaviour management programs, youth services programs and other community and social service programs under the supervision of social services or health care professionals
- Assist in evaluating the effectiveness of treatment programs by tracking clients' behavioural changes and responses to interventions
- Maintain contact with other social service agencies and health care providers involved with clients to provide information and obtain feedback on clients' overall progress
- Co-ordinate the volunteer activities of human service agencies, health care facilities and arts and sports organizations
- Maintain program statistics for purposes of evaluation and research.

Did You Know?³

- Social Service Workers can specialize in many fields of practice such as child welfare, family services, corrections, employment, supporting clients with disabilities, gerontology, or addictions.
- Community and social service workers administer and implement a variety of social assistance programs and community services, and assist clients to deal with personal and social problems. They are employed by social service and government agencies, mental health agencies, group homes, school boards, correctional facilities and other establishments.
- Social Service Workers may be employed with a varying level of education depending on the type of work they do. A diploma, bachelor's degree or master's degree may be required depending on the job.
- The average age of Community and Social Service Workers in 2005 was 39 which were lower than the Canadian worker's average age of 40 years old.
- In 2008, women represented 74.6% of all Community and Social Service Workers which is 6.8% below the level in 2000.
- In 2008, average retirement age was 62 years old

³ This section includes information taken from BC Work Futures Website (www.workfutures.bc.ca), Labour Market Information (www.labourmarketinformation.ca), Working in Canada (www.travalleraucanada.gc.ca), and Human Resources and Skills Development Canada (www23.hrsdc.gc.ca). Accessed November 2010.

Career Planning Information

Job Outlook & Local Employment Potential Information⁴

Local Employment Potential Information

Communities/Areas	Employment Potential
Thompson Okanagan Kootenay Area	Fair

The number of new graduates and job seekers should meet employers' needs. Many community and social service workers are employed in health and social service systems funded directly or indirectly by government, or work for agencies funded by voluntary organizations. Job demand is a function of funding from all three levels of government and current levels of charitable giving. Employment prospects will be better for individuals with post-secondary education and previous work experience in a social service environment or as a volunteer.

Date published: 2009-12-30



⁴ This section includes information taken from Labour Market Information (www.labourmarketinformation.ca), BC Stats (www.bcstats.gov.bc.ca) and BC Work Futures Website (www.workfutures.bc.ca). Accessed November 2010.

Job Outlook & Local Employment Potential Information Continued

Regional Employment Projections

BC Stats, with the financial assistance of the Ministry of Advanced Education and Labour Market Development, developed the Regional Employment Projection Model (REPM), designed to project industrial and occupational employment in regions of the Province of British Columbia. The model projects employment at the College and Development Region levels.

College Region: Thompson Rivers College Region

Community and Social Service Workers: Projected Annual Occupational Growth Rates

Estimated Employment 2009 = **900**

Estimated Employment 2013 = **940**

Average Annual % Change Over 5 Years (2009 – 2014) = **1%**

Health and Social Assistance: Projected Annual Growth Rates in Employment Demand

Estimated Employment 2009 = **11340**

Estimated Employment 2014 = **12140**

Average Annual % Change Over 5 Years (2009 – 2014) = **1.4%**

Development Region: Thompson-Okanagan Development Region

Community and Social Service Workers: Projected Annual Occupational Growth Rates

Estimated Employment 2009 = **2680**

Estimated Employment 2013 = **2910**

Average Annual % Change Over 5 Years (2009 – 2014) = **1.7%**

Health and Social Assistance: Projected Annual Growth Rates in Employment Demand

Estimated Employment 2009 = **35130**

Estimated Employment 2013 = **38580**

Average Annual % Change Over 5 Years (2009 – 2014) = **2%**

Jobs are fairly evenly distributed throughout the province in relation to the general population distribution. However, employment is slightly higher than average in the Vancouver Island and Coast, **Thompson-Okanagan** and Cariboo regions when compared to the average for all occupations.

Job Outlook & Local Employment Potential Information Continued

Industrial Trends

Changes in the economy have little or no impact on the health care industry, as occupations in this industry group generally provide essential services. The Health care and social assistance industry group is mainly affected by demographics and government policy.

Population growth, longer life expectancies and demographic shifts due to population aging are increasing the demand for health care services. Governments are providing more funding and exploring new strategies to meet the increasing and changing demands placed on the industry.

Source: Adapted from A Guide to the BC Economy and Labour Market.

What Impacts Activity in this Industry?

Factor	Effect on Employment	Impact
Economic Growth	↓	A strong economy generates new jobs and increases the ability of citizens to pay for health care services. In addition, improved labour market conditions increase the ability of disadvantaged groups to find work and maintain economic independence, which may reduce the need for government income assistance.
Population Growth	↑	Generally, when a population grows, there is an increased need for health and social services.
Demographic shifts due to aging	↑	The aging of the population increases the demand for health and social services as these services tend to be used at higher rates among older age groups.
Government spending	↑	In general, increased government spending has a positive impact on industry activity and job opportunities for health care workers. Government budgets tend to be increased to a greater degree for health care services compared to social services. As a result, growth of government-funded occupations such as social worker and community service worker will likely be constrained.
Productivity	↓	Increased use of technology has an impact on health care operations and service delivery. Technological changes tend to slow employment growth in some areas of work, such as laboratory services and office and administrative support.

Types of Careers/Titles⁵

Example Career Titles

- Aboriginal Outreach Worker
- Addictions Worker
- Behavioural Aide
- Child and Youth Worker
- Community Development Worker
- Community Service Worker
- Crisis Intervention Worker
- Developmental Service Worker
- Drop-In Centre Worker
- Family Service Worker
- Financial Service Worker
- Group Home Worker
- Income Maintenance Officer – Social services
- Life Skills Instructor
- Mental Health Worker
- Rehabilitation Worker – Social services
- Social Services Worker
- Veteran Services Officer
- Welfare and Compensation Officer
- Women's Shelter Supervisor
- Youth Worker

Social Service Workers can be employed by:

- Hospitals
- Community Agencies
- School Boards
- Employee Assistance Programs
- Social Service Agencies
- Aboriginal Band Councils
- Child Welfare Organizations
- Employment Counselling Agencies
- Correctional Facilities
- Private Practice

Over half of all social workers in the province are employed by the health care and family-serving agencies, with the remainder employed in government. Employers include Aboriginal band councils, community agencies, correctional facilities, child welfare agencies, hospitals, school boards, and social service agencies.

⁵ This section includes information taken from BC Work Futures Website (www.workfutures.bc.ca). Accessed November 2010.

Working Conditions⁶

- Much time is spent in either an office setting or in a facility, but some travel may also be involved to meet with clients or consult with service providers. In addition, social workers often have extensive involvement in the legal system and may be required to conduct work in a legal court.
- This occupation can be more emotionally demanding than other occupations, and “employee burnout” is not uncommon. Large caseloads also add extra pressure in many instances.
- Although most social workers have a standard work week they may be required to work some evenings and weekends to meet with clients or attend public meetings affecting the community. As well, emergencies may also occur outside of regular office hours and sometimes demand immediate action.

Wages⁷

Earnings

	This Occupation	All Occupations
Average national hourly wage for 2008	\$19.80 per hour	\$25.20 per hour

Local Wage Information

Community/Area	Wage(\$/hr)			Reference Period
	Low	Average	High	
Thompson Okanagan Kootenay Area	9.59	17.99	25.33	2008 to 2009

⁶ This section includes information taken from BC Work Futures Website (www.workfutures.bc.ca). Accessed November 2010.

⁷ This section includes information taken from (Source: Census 2006 - Statistics Canada / Labour Force Survey - Statistics Canada) and Working in Canada (www.travalleraucanada.gc.ca). Accessed November 2010.

Skills and Qualifications Required⁸

- ☑ Previous work experience in a social service environment as a volunteer or in a support capacity may replace formal education for some employers.
- ☑ Completion of a one year **certificate** or a 2 year **diploma** may also allow you to enter this field of employment.
- ☑ Completion of a **degree** can be a requirement for some employers.
- ☑ Informational interviews or researching employers online may help you to determine the level of education required.
- ☑ Some employers may also require registration with a professional regulatory body. The regulatory body for BC is the British Columbia College of Social Workers. Further information can be accessed through their website at www.bccollegeofsocialworkers.ca.

With experience and additional training, Community and Social Service Workers may progress to professional social services positions, such as Social Workers. Social Workers may progress to administrative positions in hospitals, school systems or to particular areas of specialization with experience and training. Those who have graduate-level degrees may move into teaching and research positions at colleges or universities or into social planning in government.

Social Workers: A university degree in social work is mandatory in this province. However, increasingly, a master's degree is required for many social work positions. Supervised practical experience is a typical requirement, and individuals may also be required to pass written and/or oral provincial exams. Additional training may be required to work in certain areas of social work, such as child protection.

Qualified applicants with degrees from related fields (i.e. Youth and Child Care) may also be considered for employment.

Social Work is a regulated profession and social workers are required to be registered with the British Columbia College of Social Workers unless they are employed by an exempt employer.

Workers already licensed or certified in another province or territory in a provincially regulated occupation will have their credentials recognized in B.C. For more detailed information contact the provincial regulator. A list of provincial regulators can be found at: www.aved.gov.bc.ca/labourmobility. Additional information for foreign trained workers may be found at the Canadian Information Centre for International Credentials: www.cicic.ca.

⁸ This section includes info from Human Resources and Skills Development Canada (www23.hrsdc.gc.ca), BC Association of Social Work (www.bcaw.org) and BC Work Futures (www.workfutures.bc.ca). Accessed Nov 2010.

Education & Training⁹

There are seven schools of social work in British Columbia. There are also distance education programs available. A complete listing of Schools of Social Work in Canada can be found on the website of **The Canadian Association of Social Worker's Education.**

British Columbia Schools of Social Work

- Nicola Valley Institute of Technology
- University of Victoria
- Thompson Rivers University
- University of the Fraser Valley
- UBC School of Social Work & Family Studies
- UBC Okanagan School of Social Work
- University of Northern BC



*“Social work is founded on a long-standing commitment to respect the inherent dignity and individual worth of all persons.”
(CASW Code of Ethics, 2005)*

⁹ This section includes information taken from BC Association of Social Work (www.bcasw.org). Accessed November 2010.

Certificate Programs¹⁰

Aboriginal Community and Health Development Certificate/Diploma

Nicola Valley Institute of Technology

www.nvit.ca

Career Development Practitioner Certificate

Douglas College

www.douglas.bc.ca

Certificate in Ethnic and Intercultural Relations

Simon Fraser University

www.sfu.ca

Child Welfare Certificate

University of Northern BC

www.unbc.ca

Child, Youth and Family Studies Certificate (four program options)

College of the Rockies

www.cotr.bc.ca

Classroom and Community Support Worker Certificate

Selkirk College

www.selkirk.bc.ca

Community Mental Health Certificate

Camosun College

www.camosun.bc.ca

Community Mental Health Worker Certificate

Douglas College

www.douglas.bc.ca

Community Social Service Worker Certificate

Douglas College

www.douglas.bc.ca

Community Support and Education Assistant Certificate

Camosun College

www.camosun.bc.ca

Community Support Worker Certificate – Social Services

Sprott-Shaw Community College

www.sprottshaw.com

¹⁰ This section includes information taken from Education Planner (www.educationplanner.bc.ca)
Accessed November 2008.

Certificate Programs Continued

Community Support Worker Certificate

Vancouver Island University

www.mala.ca

Community Support Worker Certificate/Diploma

Kwantlen University Polytechnic University

www.kwantlen.bc.ca

Community Support and Education Assistant Certificate

Camosun College

www.camosun.bc.ca

Community and School Support Certificate

Thompson Rivers University

www.tru.ca

Community Support Worker Certificate

College of New Caledonia

www.cnc.bc.ca

Community Support Worker Certificate

University of the Fraser Valley

www.ufv.ca

Social Services Certificate

North Island College

www.nic.bc.ca

Human Service Worker Certificate

Okanagan University College

www.okanagan.bc.ca

Human Service Worker Certificate

College of the Rockies

www.cotr.bc.ca

Indigenous Family Support Certificate

Camosun College

www.camosun.bc.ca

Mental Health Specialty Post-Basic Certificate (Check to see if available)

Thompson Rivers University

www.tru.ca

Certificate Programs Continued

Social Service Worker Certificate

College of New Caledonia

www.cnc.bc.ca

Social Service Worker Certificate

Northwest Community College

www.nwcc.bc.ca

Social Service Worker Certificate

Selkirk College

www.selkirk.bc.ca

Social Service Worker Certificate

Thompson Rivers University - Open Learning

www.tru.ca

Social Service Worker Certificate

Langara College

www.langara.bc.ca

Substance Abuse Counselling Certificate

University College of the Fraser Valley

www.ucfv.ca

Diploma Programs

Aboriginal Community and Health Development Certificate/Diploma

Nicola Valley Institute of Technology

www.nvit.ca

Aboriginal Culture and Language Support Diploma

University of the Fraser Valley

www.ufv.ca

Child and Youth Care Diploma

Vancouver Island University

www.mala.ca

Child and Youth Care – First Nations Diploma

Vancouver Island University

www.mala.ca

Child and Youth Care Counsellor Diploma

Douglas College

www.douglas.bc.ca

Diploma Programs Continued

Child and Youth Care Diploma, Aboriginal community based course work

University of Victoria

www.uvic.ca

Child, Youth and Family Studies Diploma

College of the Rockies

www.cotr.bc.ca

Classroom and Community Support Certificate/Diploma

Douglas College

www.douglas.bc.ca

Community Social Service Worker Certificate/Diploma

Douglas College

www.douglas.bc.ca

Community Support Worker Certificate/Diploma

Kwantlen University College

www.kwantlen.bc.ca

Community, Family and Child Studies Diploma

Camosun College

www.camosun.bc.ca

Human Service Diploma – Child & Youth Care/Social Service Worker Specialty

Selkirk College

www.selkirk.bc.ca

Human Service Worker Diploma

College of the Rockies

www.cotr.bc.ca

Human Service Diploma

Thompson Rivers University

www.tru.ca

Human Service Work Diploma

Okanagan College

www.okanagan.bc.ca

Human Services Diploma

North Island College

www.nic.bc.ca

Social Service Worker (UT) Diploma

College of New Caledonia

www.cnc.bc.ca

Diploma Programs Continued

Social Services (First Nations Option) Diploma

University of the Fraser Valley

www.ufv.bc.ca

Social Services Diploma

Vancouver Island University

www.mala.ca

Social Service Worker Diploma

College of New Caledonia

www.cnc.bc.ca

Social Service Worker (Certificate/Co-ordinated Diploma) Program

Langara College

www.langara.bc.ca

Social Service Worker Diploma

Northwest Community College

www.nwcc.bc.ca

Social Services Worker Diploma

Northern Lights College

www.nlc.bc.ca

Substance Abuse Counseling Diploma

University of the Fraser Valley

www.ufv.bc.ca

Youth Justice Worker Diploma

Douglas College

www.douglas.bc.ca

Degree Programs

Associate of Arts (Social Work) Degree – Vancouver Campus

Nicola Valley Institute of Technology

www.nvit.bc.ca

Associate of Arts (Pre-Social Work) Degree

Camosun College

www.camosun.bc.ca

Bachelor of Social Work Degree

Institute of Indigenous Government

www.indigenous.ca

Degree Programs Continued

Bachelor of Arts in Child and Youth Care Degree

University of Victoria

www.uvic.ca

Bachelor of Arts in Child and Youth Care Degree

Vancouver Island University

www.mala.ca

Bachelor of Arts in Child and Youth Care Degree

University of the Fraser Valley

www.ufv.ca

Bachelor of Social Work Degree

Thompson Rivers University

www.tru.ca

Bachelor of Social Work Degree

Simon Fraser University

www.sfu.ca

Bachelor of Social Work Degree – Merritt Campus

Nicola Valley Institute of Technology

www.nvit.bc.ca

Bachelor of Social Work Degree

University of Victoria

www.uvic.ca

Bachelor of Social Work Degree

University of British Columbia

www.ubc.ca

Bachelor of Social Work Degree

University of British Columbia – Okanagan

www.ubc.ca/okanagan

Bachelor of Social Work Degree

University of Northern British Columbia

www.unbc.ca

Bachelor of Social Work Degree

University College of the Fraser Valley

www.ufv.ca

Internet Resources

www.accesskamloops.org	Access Kamloops
www.aosw.org	Association of Oncology Social Work
www.aswb.org	Association of Social Work Boards (ASWB)
www.bcasw.org	BC Association of Social Workers
www.employment.gov.bc.ca/	BC Government Postings
www.bcgeu.ca	BC Government and Service Employees' Union
www.gov.bc.ca/mcf	BC Ministry of Children and Family Development
www.bcpwa.org	The BC Persons with AIDS Society
www.casw-acts.ca	Canadian Association of Social Workers
www.ccsa.ca/CCSA/EN/TopNav/Home	Canadian Centre on Substance Abuse
www.ccsd.ca	Canadian Council on Social Development
www.cswe.org	Council on Social Work Education
www.cssea.bc.ca/home.php	Community Social Services Employers' Association
www.charityvillage.com	Charity Village: Canada's Supersite for the Non-Profit Sector
www.bccda.org	BC Career Development Association
www.kidney.org/professionals/CNSW	National Kidney Foundation
www.nacsw.org/index.shtml	North American Association of Christians in Social Work
www.marson-and-associates.com/rural	Rural Social Work Caucus
www.vcn.bc.ca/shra	Canadian Mental Health Association Link
www.sshrc-crsh.gc.ca	Social Sciences and Humanities Research Council of Canada
www.geocities.com/heartland/4862	Social Work Café
www.volunteerkamloops.org	Volunteer Kamloops

Employer Contact Information

Aboriginal Employment Services

144A Briar Avenue
Kamloops, B.C. V2B 1C1
Tel: (250) 554-4556
Fax: (250) 554-4573

ASK Wellness Centre (AIDS Society of Kamloops)

433 Tranquille Road
Kamloops, B.C. V2B 3G9
Tel: (250) 376-7558
Fax: (250) 376-7530
Toll-Free: (800) 661-7541
Email: info@askwellness.ca
Website: www.askwellness.ca

Axis Family Resources

651 Victoria Street
Kamloops, B.C. V2C 2B3
Tel: (250) 851-2947
Or (250) 851-2977
Toll-Free: (877) 392-1003
Fax: (250) 851-2949
Email: brenda.wagner@axisfamilyresources.ca
Website: www.axisfamilyresources.ca

Big Brothers and Sisters

821 Seymour Street
Kamloops, B.C. V2C 2H6
Tel: (250) 374-6134
Fax: (250) 374-4930
Website: www.bbbskamloops.ca

Boys and Girls Club of Kamloops McArthur Island Club

Box 885 Main Station
Kamloops, B.C. V2C 5M8
Tel: (250) 554-5437 (KIDS)
Fax: (250) 554-2756
Email: admin@bgckamloops.com
Website: www.bgckamloops.com

Canadian Cancer Society

#111 – 450 Lansdowne Street
Kamloops, B.C. V2C 1Y3
Tel: (250) 374-9188
Fax: (250) 374-4515
Website: www.bc.cancer.ca

Canadian Mental Health Association

857 Seymour St, Kamloops, BC V2C 2H6
Tel: (250) 374-0440
Fax: (250) 374-8718
Email: kamloops@cmha.bc.ca
Website: www.kamloops.cmha.bc.ca

Canadian National Institute for the Blind (CNIB)

#101 - 635 Victoria Street
Kamloops, B.C. V2C 2B3
Tel: (250) 374-8080
Toll-Free: (800) 563-2642
Fax: (250) 374-8033

Canadian Red Cross Society

943 Victoria St, Kamloops, BC V2C 2C1
Tel: (250) 372-2334
Fax: (250) 372-0869
Website: www.redcross.ca

Elizabeth Fry Society

827 Seymour St, Kamloops, BC V2C 2H6
Tel: (250) 374-2119
Toll-Free: (866) 374-2119
Fax: (250) 374-5768
Email: officemanager@kamloopsefry.com
Office Manager: Cheryl Pittenger
Website: www.kamloopsefry.com

Interior Community Services

765 Tranquille Rd, Kamloops, BC V2B 3J3
Tel: (250) 554-3134
Fax: (250) 376-3040
Email: adm@interiorcommunityservices.bc.ca
Website: www.interiorcommunityservices.bc.ca

Interior Health Authority Mental Health and Addictions Services Royal Inland Hospital

311 Columbia St (Royal Inland Hospital)
Kamloops, B.C. V2C 2T1
Phone: (250) 314-2352
Toll-Free: (866) 972-9299
Fax: (250) 314-2172
Email: externalrecruitment@interiorhealth.ca
Website: www.interiorhealth.ca

Employer Contact Information Continued

Interior Health

All job postings and applications are to be completed online

Interior Indian Friendship Society

125 Palm St, Kamloops, B.C. V2B 8J7
Tel: (250) 376-1296
Fax: (250) 376-2275
Email: harold@iifs.ca

Interior Métis Child and Family Services

#3E - 750 Cottonwood Avenue
Kamloops, B.C. V2B 3X2
Tel: (250) 554-9486
Fax: (250) 554-9487
Website: www.imcfs.bc.ca

John Howard Society

#100 - 529 Seymour Street
Kamloops, B.C. V2C 0A1
Tel: (250) 434-1700
Fax: (250) 434-1701
Email: johnhoward_society@bc.sympatico.ca
Website: www.johnhoward.ca

Kamloops Brain Injury Association

408 Victoria Street
Kamloops, B.C. V2C 2A7
Tel: (250) 372-1799
Fax: (250) 372-3196
Email: tlstone@kbia.ca
Executive Director: Terry-Lynn Stone

Kamloops Christian Hostel

207 West Victoria Street
Kamloops, B.C. V2C 1A5
Tel: (250) 372-3031
Toll-Free: (888) 764-3663
Fax: (250) 372-3032
Email: kcmh@telus.net

Kamloops Family Justice Centre

#200 - 444 St. Paul Street
Kamloops, B.C. V2C 2J6
Tel: (250) 828-4688
Fax: (250) 828-4689
Toll-Free: (888) 764-3663

Kamloops Food Bank and Outreach Society

171 Wilson Street
Box 1513 Station Main
Kamloops, B.C. V2C 6L8
Tel: (250) 376-2252
Fax: (250) 376-0052
Email: info@kamloopsfoodbank.org
Website: www.kamloopsfoodbank.org

Kamloops Immigrant Services

109 Victoria St, Kamloops, BC V2C 1Z4
Tel: (250) 372-0855
Toll-Free: (866) 672-0855
Fax: (250) 372-1532
Email: kis@telus.net
Website: www.immigrantservices.ca

Kamloops Indian Band

#200 - 355 Yellowhead Highway
Kamloops, B.C. V2H 1H1
Tel: (250) 828-9700
Fax: (250) 372-8833
David Leroux, Manager of HR
Email: dleroux@kib.ca
Website: www.tkemlups.ca

Kamloops Probation Attendance Program

#203 – 750 Cottonwood Avenue
Kamloops, B.C. V2B 3X2
Tel: (250) 554-1116

Kamloops Sexual Assault Counselling Centre

2 FL - 627B Victoria Street
Kamloops, B.C. V2C 2B3
Tel: (250) 372-0179
Fax: (250) 372-2107
Website: www.ksacc.ca

Ministry of Children and Family Development Regional Office

Suite #210 – 1165 Battle Street
Kamloops, B.C. V2C 2N4
Phone: (250) 371-3650
Fax: (250) 372-3611
Website: www.gov.bc.ca/mcf/

Employer Contact Information Continued

Kamloops – North Shore Office

#201 – 905 Southill Street
Kamloops, B.C. V2B 7Z9
Phone: (250) 554-5800

Kamloops – South Shore Office

#125 – 1165 Battle Street
Kamloops, B.C. V2C 2N4
Phone: (250) 371-3600

Ministry of Housing and Social Development-Interior Service Office

Box 790 Station Main
Kamloops, B.C. V2C 5M4
Toll-Free: (866) 866-0800
Fax: (866) 571-7999
Email: off470@gov.bc.ca

Kamloops – North Shore Office

726B Sydney Avenue
Kamloops, B.C. V2B 1M9
Toll-Free: (866) 866-0800
Fax: (250) 554-5850
Email: off472@gov.bc.ca

Kamloops – South Shore Office

631 Seymour Street
Kamloops, B.C. V2C 2H1
Toll-Free: (866) 866-0800
Fax: (250) 371-3756
Email: off471@gov.bc.ca

MS Society of Canada Kamloops and Area Chapter

180 - 546 St. Paul Street
Kamloops, B.C. V2C 5T1
Tel: (250) 314-0773
Toll-Free: (800) 268-7582
Fax: (250) 314-0722
Email: info.kamloops@mssociety.ca
Website: www.mssociety.ca

Native Courtworkers & Counseling Association of BC

#116A - 455 Columbia Street
Kamloops, B.C. V2H 1H1
Tel: (250) 828-7949
Fax: (250) 828-7969
Website: www.nccaba.ca

New Life Mission

181 West Victoria Street
Kamloops, B.C. V2C 1A5
Tel: (250) 372-9898
Fax: (250) 372-1373
Email: info@newlifemission.ca
Website: www.newlifemission.ca

Outreach Centre – New Life Mission

346 Seymour Street
Kamloops, B.C. V2C 2G2
P.O. Box 712
Kamloops, B.C. V2C 4C3

People in Motion

182B Tranquille Road
Kamloops, B.C. V2B 3G1
Tel: (250) 376-7878
Toll-Free: (877) 414-4241
Fax: (250) 376-4689
Email:
information@peopleinmotion.org
Website: www.peopleinmotion.org

Phoenix Centre

#922 - 3rd Avenue
Kamloops, B.C. V2C 6W5
Telephone: (250) 374-4634
Toll-Free: (877) 318-1177
Fax: (250) 374-4621
Email: ksad@phoenixcentre.org
Website: www.phoenixcentre.org

RCMP Victim Services

560 Battle Street
Kamloops, B.C. V2C 6N4
Tel: (250) 828-3223

Sage Health Centre (formerly Kiwanis)

101 Columbia Street
Kamloops, B.C. V2C 2S7
Tel: (250) 374-6551
Fax: (250) 374-2399
Email:
admissions@sagehealthcentre.ca
Website: www.sagehealthcentre.ca

Employer Contact Information Continued

**Seasons Consulting Group Ltd.
(The Rehab Group)**
#120 – 540 Seymour Street
Kamloops, B.C. V2C 2G9
Tel: (250) 314-0377
Toll-Free: (888) 421-5551
Fax: (250) 314-0378
Email: info@seasonsconsultgroup.ca
Website: www.therehabgroup.ca

**The Salvation Army
(Kamloops Community Church)**
344 Poplar Street
Kamloops, B.C. V2B 4B8
Tel: (250) 554-1611
Fax: (250) 554-1689
Website: www.salvationarmy.ca

THEO BC (Open Door Group)
657 Victoria Street
Kamloops, B.C. V2C 2B3
Tel: (250) 377-3670
Toll-Free: (866) 377-3670
Fax: (250) 377-3695
TTY/TTD: (250) 377-3681
Email: humanresources@theobc.org
Website: www.theobc.org or
www.openfoorgroup.org

Visions21 Consulting
#202 – 444 Victoria Street
Kamloops, B.C. V2C 2A7
Tel: (250) 314-9565
Fax: (250) 314-9595
Email: info@pathwaysprogram.ca
Website: www.pathwaysprogram.ca

Volunteer Kamloops
645 Victoria Street
Kamloops, B.C. V2C 2B3
Tel: (250) 372-8313
Fax: (250) 372-8314
Email: info@volunteerkamloops.com
Website: www.volunteerkamloops.com

**White Buffalo Aboriginal Health
Society & Resource Centre**
517 Tranquille Road
Kamloops, B.C. V2B 3H3
Tel: (250) 554-1176
Toll-Free: (888) 554-1176
Fax: (250) 554-1157
Website: www.whitebuffalo.name/

YWCA – YMCA of Kamloops
400 Battle Street
Kamloops, B.C. V1S 1L8
Tel: (250) 372-7725
Fax: (250) 372-3023
Website: www.kamloopsy.org

For a more comprehensive list of employers and programs, visit Access Kamloops at www.accesskamloops.org.