



MINING IN BC



- Introduction to Mining
- Career Planning Information
 - ▶ Working Conditions
 - ▶ Types of Careers/Titles
 - ▶ Wages
 - ▶ Education/Training
- Work Search Tips
 - ▶ Prepared to Get Hired
 - ▶ Where are Mining Jobs Advertised
- Internet Resources
 - ▶ Careers, Research and General Information
 - ▶ BC Employer Contacts
- Additional Resources
 - ▶ Mining Directories

A compilation organized
by TQM Consulting in association with the
Kamloops Work Search Centres

© September 2010

Table of Contents

Introduction to Mining	3
Did you know?	4
Mining in BC.....	5
Career Planning Information	6
Working Conditions.....	7
Types of Careers	8
Entry Level Jobs	8
Skilled Jobs	8
Professional Jobs	9
Jobs Serving the Mining Industry.....	9
Wages.....	10
Education and Training	10
Educational Institutes Offering Mining Specific Training	11
Work Search Tips.....	13
Prepare to Get Hired.....	13
Where Are Mining Jobs Advertised?.....	14
Internet Resources.....	15
Careers, Research and General Information Internet Sites	15
BC Employer Contacts.....	16
Metal Mines	16
Coal Mines.....	19
Mineral Mines	21
Diamond Mines.....	25
Additional Resources	28
Mining Directories.....	28

Introduction to Mining

Mining is defined as “the act, process, or industry of extracting ores, coal, precious metals etc., from mines.”

When it comes to the mining industry sector, Canada is a world leader. One of this country’s key advantages is our vast natural resources. That and an upswing in metal prices over the past few years, combined with high oil prices, are stimulating investment in this sector. As a result, Canada’s mining industry is growing. The industry is investing to enhance productivity, including improvements to processes, modernization, expansions, developing new products, and conducting research and development and exploration. In fact, one in every 46 Canadian jobs is related to mining. In the goods producing industry, mining accounts for one in every 10 jobs. ¹

Of course this means there are more jobs than ever in the mining industry and as with many other industries, this along with retiring employees is creating a skill shortage. With as many jobs and opportunities that arise from this industry, now is a great time to find employment! Jobs can be found both directly in the mining sector as well as in associated industries (accounting, camp cooking, etc.).

This resource binder presents useful information on:

- planning a career in the mining industry
- general hints for securing work in the mining industry
- a listing of the mines and quarries operating in British Columbia



© www.mining.bc.ca

¹ www.mitac.ca/_english/_mining/overview.cfm accessed September 2010

Did you know?²

Minerals and metals are essential to our daily lives. It's difficult to imagine a world without them. Did you know we use . . .

zinc

for sunscreen and medical ointments.

graphite, aluminum, and titanium

for sports equipment.

diamonds and gold

for special gifts.

phosphate, nitrogen, sulphur and potash

for fertilizers.

nickel

for batteries.

barite, lead, indium

for entertainment products.

iron and calcium

for daily vitamins.

clay, gypsum, limestone, sand and gravel

for our homes.

cobalt

for turbine engines.

steel, copper, zinc, barium and graphite

for vehicles.

coal and uranium

for electricity.

stainless steel

for surgical instruments.



² <http://www.acareerinmining.ca/en/industry/everydayproducts.asp> accessed September 2010

The Facts on Mining in British Columbia

- British Columbia is Canada's largest producer of copper, its only producer of molybdenum and the largest exporter of coal.
- The B.C. mining industry reported net income of \$2.3 billion in 2009.
- BC's mining sector contributed \$5.7 billion to the provincial economy in 2009.
- The average number of individuals employed by BC mining companies increased in 2009 to 7,688. The average salary for 2009 was \$110,800.
- There are 24 mining projects in BC currently under environmental review in the permitting process. Mine reclamation is a fundamental part of the mining life cycle in British Columbia. The technical and research committee on reclamation has been dedicated to excellence in mine reclamation in BC since 1977.
- Actual land usage for a mine is extremely small relative to the area explored-less than 28,000 hectares are currently being used by mining which is less than 0.03 per cent of B.C.'s total land base.
- 60% of Canadian mining and exploration companies are based in BC.
- Major minerals produced in B.C., as a percentage of Canada's production: Coal (66%); Copper (40%); Silver (50%); Gold, Lead, Molybdenum and Zinc.
- Coal represents a third of the industrial traffic at the Port of Vancouver, the largest port in Canada.
- In 2008, the government of B.C. spent \$367 million in provincial exploration expenditure, compared to \$416 million in 2007.
- Consistent with 2007, WorkSafeBC statistics reports that the provincial mining industry is regarded as the safest resource industry in BC. Since 1993 the employee injury rate has been reduced by half, to 1.9 injuries per 100 worker years.

Fact sources: PricewaterhouseCoopers 2008 mining report, Work Safe BC, Government of Canada, Technical and Research Committee on Reclamation, Mining Association of B.C., and the Vancouver Port Authority.

Career Planning Information

Mining supports, directly and indirectly, about 5% of all Canadian employment. Because of the prevalence of mined materials in our lives, every job created in the mining industry creates at least one other job in the Canadian economy.

Many sectors in Canada are concerned about a looming skills shortage. The mining sector is definitely one of them. With industry growth and an aging workforce, finding qualified employees is becoming a major challenge for the industry.

The following recruitment issues currently face the industry³:

- **Retirement** – Over 50% of the workers are aged 40 to 54. As a result, it is predicted that 24.5% - 40% of the current workers will retire within the next 10 years.
- **Hiring Skilled Employees** – Student enrolment in mining-related post-secondary programs is well below what is believed to be needed to fill the demand for skilled workers.

With all this in mind, career opportunities are widespread. Jobs range from entry-level labouring positions up to highly educated professional positions. A person with the right training should be able to easily make a move into the industry and quickly move up into higher ranking positions as current employees begin to retire.



Working Conditions

Work environments vary by occupation. Employees can find themselves either working outside in the weather, spending much of their time in a building or underground.

The mining industry primarily digs up the earth's resources in one of two ways: (1) from below the earth's surface known as *underground mines*, or (2) from an entirely open area called a *surface mine*. Most of BC's mines are surface mines.



While surface mining is usually less hazardous than underground mining, working conditions in mines and quarries can be unusual and sometimes dangerous. Underground mines are damp and dark, and some can be very hot and noisy. Workers in surface mines and quarries work in all kinds of weather and climates in the rugged outdoors. Physical strength and stamina are necessary because the work involves lifting, stooping, and climbing.

The mines in communities such as Yellowknife hire miners who work regular eight hour shifts year round except for holidays. Workers in the fly-in-fly-out mines (with camps) work twelve-hour shifts seven days a week. They usually stay in camp for two weeks and then are flown out for two weeks. Note: mines have different requirements for lengths of time to stay in camp. Most jobs are year round permanent jobs.



Most mineral exploration field work is done between May and October. Diamond drilling and bulk sampling are usually done in the winter. The number of people in a camp varies from as little as 2 in a prospecting camp to over 100 in an advanced exploration project.

Types of Careers⁴

With over 120 different careers in the mining industry, the job opportunities are widespread. The industry needs diverse skills and abilities from people in many different occupations, ranging from unskilled labourers to management. The following is a sampling of positions and career potentials.

Entry Level Jobs

These jobs require little or no previous experience. On-the-job training may be required for some of these jobs. You must be able to read and write, though some require at least a Grade 12 level of education.

- Labourer
- Janitor/Dryman
- Blast Helper
- Driller's Assistant
- Geophysical Assistant
- Mechanic's Helper
- Electrician's Helper
- Grinding Operator
- Surveyor's Helper
- Crusher Operator
- Sampler Reagent Operator
- Flotation Operator
- Dewatering Operator
- Cook's Helper
- Warehouse Person

Skilled Jobs

Some of these jobs require that you have previous mining experience and generally require training (one or two year programs). These jobs require that you be a journeyman or certified trades person.

- Driller
- Blaster
- Heavy Duty Mechanic
- Miner
- Mining Technician
- Carpenter
- Cook
- Plumber
- Steamfitter/Pipefitter
- Welder
- Machinist
- Millwright
- Engineering Technician
- Draftsperson
- Accounts Clerk
- Equipment Operator
- First Aid Attendant
- Helicopter Pilot
- Land Surveyor
- Purchasing Agent
- Electrician
- Crusher Operator

⁴ <http://www.infomine.com/careers/jobfair/jobsinmining.asp#entry> accessed September 2010

Professional Jobs

These jobs require a college diploma or university degree. Technology programs are generally two to four years in length.

- Mill Maintenance Foreman
- Electrical Foreman
- Mine Foreman
- Mill Foreman
- Geologist
- Mechanical Engineer
- Structural Engineer
- Mining Engineer
- Environmental Engineer
- Accountant
- Safety Officer
- Warehouse Supervisor
- Mining Surveyor/Technician
- Human Resources Manager
- Material Manager
- General Manager
- Accountant
- Computer Programmer
- Geochemist
- Manager of Training

Jobs Serving the Mining Industry

There are many other jobs that are associated with the mining industry. A lot of companies sub-contract out different parts of the mining process. You can create your own opportunities by providing goods and services to the industry. Some examples of jobs related to mining are:

- Prospecting
- Maintenance (catering, laundry, etc.)
- Camp Construction (buildings, roads, dams, etc.)
- Expediting
- Staking Claims
- Security
- Line cutting
- Trucking
- Geophysical Surveying
- Sampling
- Supplying Food
- Trenching
- Camp Management
- Cooking
- Diamond Drilling
- Remote Communications
- Airplane Passenger and Freight Handling
- Road and Airport Building and Maintenance
- Supplying Construction Materials
- Equipment Rental
- Making Special Clothing or Equipment



Wages⁵

Mining pays one of the highest wages and benefits of any resource industry in the province of BC (an average of over \$94,700 per year). To attract and retain employees, various mines even offer straight wage, bonus, salary and contract schemes.

We have outlined a few industry related wages below. Please note that, these statistics are average figures and will not apply to every situation.

Average Weekly Earnings in the Mineral and Metals Industry and Competing Industrial Sectors from 1997-2006

<u>Industry</u>	<u>\$/week</u>
Canada Mineral Industry	1107.00
Coal Mining Industry	1307.83
Metal Mining Industry	1160.63
Non-metallic Mining Industry	997.23
Forestry	967.00
Construction	895.00
Finance and Insurance	965.00
Manufacturing	906.00

Wages offered by different employers will vary depending on location and whether the employer is unionized. Remote northern mining communities offer subsidies or other benefits to offset the higher cost of living.

Education and Training⁶

Entry-level Labouring Positions – Most entry-level jobs require little or no previous experience. Workers usually start as helpers and learn skills on the job. Even with this being the case, employers usually have a set of minimal skills/educational requirements that must be met. Contact your employer of choice to determine what their specified level of qualifications would be.

- Some require at least a Grade 12 level of education
- Others prefer to hire recent graduates from technical programs in mining
- Workers in production occupations usually must be at least 18 years old, in good physical condition, and be able to work in confined spaces
- Additional certification considered, but not required: WHMIS, First Aid, Transportation of Dangerous Goods, Formal Custodial Training, Air Brakes Endorsement, relevant experience in labour or heavy machine operation

Note: Formal training is becoming more important as more technologically advanced machinery and mining methods are used.

⁵http://www.miningworks.mining.ca/miningworks/media_lib/documents/Facts_Figures_2007_E.pdf

accessed September 2010

⁶ www.bls.gov/oco/cg/cgs004.htm accessed October 2008

Education and Training Continued

Skilled/Trades Positions – Trades positions (i.e. mechanics, electricians, welders) require the workers to work in and around the mines and quarries, but not be directly involved in the extraction process. These positions generally require the workers to have specialized certification (i.e. inter-provincial trades certification), as well as safety training specific to working under the unusual conditions found in the mines. Such basic training could include confined space awareness.

Skilled positions that require workers to be directly involved with the extraction process (i.e. miners) have minimum certification standards set by the federal and provincial governments. This is to ensure that miners and officials are aware of hazards and will follow approved procedures. MiHR has developed 44 courses and 120 course outlines covering a wide variety of subjects in mineral extraction and processing. The courses deal with basic underground mining, milling and open-pit mining skills and some advanced and specialty skills. If you are interested in these courses, please contact them by email at info@MiHR.ca.

Professional/Managerial Positions – A university degree (master's level) in engineering, one of the physical sciences, or business administration, is preferred.

There are many universities and colleges or technical institutions (17+) which offer mining specific programs throughout Canada. The following outlines five of British Columbia's programs. For further resources, refer to the *Internet Resources* section of this binder.

Educational Institutes Offering Mining Specific Training

School of Exploration and Mining

The school develops industry-related courses and programs and offers training in various areas of mining and exploration. It operates in partnership with Smithers Exploration Group and BC Ministry of Energy, Mines & Petroleum. For more information visit their website at www.nwcc.bc.ca.



Mining Technology Diploma of Technology

In the first year, students receive training in basic science, math and communications as well as geology, mining methods, blasting, surveying and computer applications. In the second year, the emphasis is on mining and the engineering and science skills required for the mining industry. The highlight of the second year is a field school and mining project that integrates many of the courses taken during the second year into the development of an industry-standard report detailing a proposed new mine development plan. For more information contact the Mining Technology department at (604) 432-8323 or visit www.bcit.ca.



Educational Institutes Offering Mining Specific Training Continued

Mining Apprenticeship Program (MAP)



The College established the Mining Apprenticeship program in **2004/2005**, beginning with the **Heavy Duty Mechanics** trade. **MAP** is an innovative and flexible apprenticeship program developed by the College of the Rockies to increase access to skilled workers in the region. For more information visit www.cotr.bc.ca.

School of Mining Engineering



Offers Undergraduate and Graduate programs. Courses are designed to cover a wide and diverse range of subjects in order to meet the challenges that will be faced in the Mining Industry. General engineering principles are taught, followed by courses specific to mining and mineral processing. For more information visit www.mining.ubc.ca.

Thompson Rivers University



Offers a variety of programs and courses qualifying for work at mines. These include Trades and Technology; electrical, welding, heavy duty mechanics. As well as sciences and natural resources programs. For more information visit their website at www.tru.ca

Work Search Tips

The Work Search Centre staff contacted some of the major BC mining companies and found that both hiring and job posting procedures varies from company to company. Companies advertise positions on their own website, some primarily use word of mouth, and others advertise in job banks (internet). How they advertise often depends on the size of the company.

Job seekers will find more success if they research individual company hiring practices prior to submitting an application. Most of the industry's recruitment efforts are informal and network-based. This binder provides the contact information needed to initiate the research into BC mining companies (see the *Employer Contact* section).

The most valuable research will come from directly contacting individual mining companies, as each one varies slightly in hiring practices and qualification requirements.

Prepare to Get Hired

Entry Level Jobs

Due to the large number of unsolicited resumes they receive, most mines do not need to post entry-level positions. You can fax, e-mail or deliver resumes in person. Employers will look for individuals who highlight the following skills on their resumes:

- Driver's Licence
- Labouring experience
- Physically fit and motivated
- Grade 12 helpful, not mandatory for all mines
- Certificates (not a
 - ▶ WHMIS, First Aid, Transportation of Dangerous Goods
 - ▶ Helpful to list other certificates, shows motivation and desire to improve skill base

Resume Tips

Your resume is the employer's first look at who you are and what you offer. Writing the best resume to suit your needs is vital to your career success. With this in mind, Work Search Centre Staff have developed a handout on resume development. Check the resource library for various handouts on resume writing.

Prepare to Get Hired Continued

Interview Skills

Before attending an interview, we suggest going online to “Google” the company in question. Find out everything you can about them. Get an understanding or “feel” for what the company is about. Learn more about the industry. This is simply one of the many things that your competitors are doing to prepare for the interview, too.

If you require assistance with the computer, let one of our staff know. If you want some example interview questions to help you prepare, check out our resource library.

Where Are Mining Jobs Advertised?

Job Fairs: Job Fairs are considered one of the best forums for job-seekers to meet employers and get hired. The most popular job fair is the Mining Rocks Career & Job Opportunities Tour (February - April). For updates on new job fairs in your geographical area, check the www.infomine.com website (please note: this site requires a \$15/month subscription).



Other Venues

- Individual company websites
- Newspapers in local mining communities
- Industry specific newspapers such as Northern Miner
- Personal contacts and word of mouth
- Trades organizations

Internet Resources

The internet is a useful tool in conducting both general and specific research on the mining industry. This section provides links to British Columbia, Canadian and some International mining related websites. Job seekers can use these links to investigate current and proposed exploration projects and to pursue online job leads.

Careers, Research and General Information Internet Sites

Job Postings

InfoMine (requires \$15/month subscription)	www.infomine.com
Bushrat	www.bushrat.net
Monster	www.monster.ca
Job Bank	www.jobbank.gc.ca
Northern Miner	www.northernminerjobs.com
MineJob.com	www.minejob.com
Canadian Mining Journal	www.canadianminingjournal.com

General Mining Information

Mining Industry Human Resources Council	www.mihrc.ca
Ministry of Energy, Mines & Petroleum	www.empr.gov.bc.ca/mining
Explore For More: A Career In Mining	www.acareerinmining.ca
Mining Association of BC	www.mining.bc.ca
Mining Association of Canada	www.mining.ca
Kamloops Exploration Group	www.keg.bc.ca
Mineral Resources Education Program of BC	www.bcminerals.ca
Smither's Exploration Group	www.smithersexplorationgroup.com
Association for Mineral Exploration BC	www.amebc.ca
Canada Oil, Gas and Mining Directory	www.ic.gc.ca
Canadian Mining Journal	www.canadianminingjournal.com
Prospectors and Developers Assoc. of Canada	www.pdac.ca
Chamber of Mines of Eastern BC	www.cmebc.com
Can Learn (Educational Listing)	www.canlearn.ca
BC Technical and Research Committee on Reclamation	www.trcr.bc.ca
The Canadian Institute of Mining, Metallurgy & Petroleum	www.cim.org/minerals/careers.cfm
BC Gold	www.bcgold.com

BC Employer Contacts

The following sections provide you with a list of employer contacts for the operational mines and quarries in BC. These listings have been compiled from a variety of website resources. They should be considered only as a starting point for your research, as the industry is volatile (mines opening and closing). Some of the information may have changed since the information was last accessed.

Metal Mines

New Afton Mine – (New Gold Inc.)

Corporate Office

3110 - 666 Burrard Street, Vancouver, B.C. V6C 2X8

Tel: (604) 696-4100

Fax: (604) 696-4110

Website: www.newgold.com

Candidates are requested to only apply through the website

Location: 10 km from Kamloops

***Please Note:** The Human Resources Department has moved to the new Afton mine site. Due to mine safety and security issues, employment applications CANNOT be hand delivered and WILL NOT be accepted by site security. Individuals interested in applying for employment at the Afton mine are encouraged to go online to www.newgold.com then click on careers to submit an application.*

Blackdome Gold Mine - (Sona Resources Corporation)

Corporate Office

Suite 802, 1166 Alberni Street, Vancouver, B.C. V6E 3Z3

Tel: (604) 684-6677

Fax: (604) 684-6678

Website: www.sonaresources.com

Location: Southwestern B.C.

Bralorne Gold Mine - (Bralorne Gold Mines Ltd.)

Corporate Office

Suite 400, 455 Granville Street, Vancouver, B.C. V6C 1T1

Tel: (604) 682-3701

Fax: (604) 682-3600

Website: www.bralorne.com

Location: 241 km north of Vancouver

Endako Mines (A joint venture - Thompson Creek Mining Ltd. and Sojitz Moly Resources Inc.)

Attn: Ms. Nita Ossi, Human Resource Co-ordinator – Endako Mines

Bag 4001, Fraser Lake, B.C. V0J 1S0

Tel: (250) 699-6211, ext 313

Fax: (250) 699-7775

E-mail: endako-resumes@tcrk.com

Website: www.endakomines.com

Location: 190 km west of Prince George

Galore Creek Mine - (A joint venture of NovaGold Resources Inc. and Teck Resources Limited)

NovaGold Resources Inc. - Corporate Office

Suite 2300, 200 Granville Street

P.O. Box 24, Vancouver, B.C. V6C 1S4

Toll Free: (866) 669-6227

Teck Resources Limited - Corporate Office

Suite 3300, Bentall 5, 550 Burrard Street, Vancouver, B.C. V6C 0B3

Tel: (604) 699-4000

Fax: (604) 699-4750

E-mail: galore.project@gcmc.ca

Website: www.novagold.com or www.teck.com

Location: 150 km northeast of Stewart, B.C.

Gibraltar Mines Limited (Taseko Mines Limited - 75% interest / Ledcor Mining Ltd.)

Taseko Mines Limited - Corporate Office

#300 - 905 West Pender Street, Vancouver, B.C. V6C 1L6

Mine address:

10251 Gibraltar Mine Road

McLeese Lake, B.C. V0L 1P0

Tel: (250) 297-6211

Fax: (250) 297-6546

Career Opportunities:

Human Resources – Gibraltar Mines Limited

P.O. Box 130

McLeese Lake, B.C. V0L 1P0

Fax: (250) 392-3121

E-mail: recruit@gibraltarmine.com

Website: www.tasekomines.com

Location: Near Williams Lake

Table Mountain Property – (Hawthorne Gold Corp.)

Corporate Office

Suite 1580, One Bentall Centre, 505 Burrard Street, Box 72, Vancouver, B.C. V7X 1M5

Tel: (604) 629-1505

Toll Free: (888) 629-1505

Fax: (604) 629-0923

Career Opportunities:

Human Resources – Nerie Bondoc

Hawthorne Gold Corp.

Suite 1580, One Bentall Center , 505 Burrard Street, Box 72, Vancouver, B.C. V7X 1M5

Fax: (604) 629-0923

E-mail: nbondoc@hemmingsenmanagement.com

Subject Line: Title of position

Website: www.hawthornegold.com

Location: Northern B.C. near Yukon border on Highway 37

Highland Valley Copper Mine (Teck Cominco Ltd. - 97.5% interest, 2.5% held indirectly by 3rd parties through Highmont Mining Company)

Human Resources
Highland Valley Copper
P.O. Box 1500
Logan Lake, B.C. V0K 1W0
Tel: (250) 523-2443
Fax: (250) 523-3242
Email: hr@hvcopper.com
Website: www.teck.com
Apply online – position posted
Location: Logan Lake

Huckleberry Mine - (Imperial Metals Corporation - 50% interest)

Corporate Office
200 – 580 Hornby Street
Vancouver, B.C. V6C 3B6
Tel: (604) 669-8959
Fax: (604) 687-4030
Email: hr@huckleberrymines.com
Website: www.imperialmetals.com
Location: Central B.C. – 123 km southwest of Houston

Kemess Mine - (Northgate Minerals Corporation)

Human Resources Recruiter
P.O. Box 3519
Smithers, B.C. V0J 2N0
Tel: (604) 639-8500
Fax: (604) 639-8501
E-mail: resumes@kemess.com
Website: www.northgateminerals.com
Location: North Central B.C. – 300 km northwest of Mackenzie

Mount Polley Mine - (Imperial Metals Corporation - 100% interest)

Corporate Office
200 – 580 Hornby Street
Vancouver, B.C. V6C 3B6
Tel: (604) 669-8959
Fax: (604) 687-4030
Human Resources Department
P.O. Box 12
Likely, B.C. V0L 2N0
Fax: (250) 790-2613
E-mail: humanresources@mountpolley.com
Website: www.imperialmetals.com/Mountpolley.asp
Location: South B.C. – 100 km northeast of Williams Lake

Myra Falls Operations - (Breakwater Resources Ltd. - 100% interest)

Corporate Office

95 Wellington Street West, Suite 950

Toronto, ON M5J 2N7

Tel: (416) 363-4798

E-mail: careers@breakwater.ca

Website: www.breakwater.ca

Location: Situated in Westmin Provincial Park on central Vancouver Island

Coal Mines

Basin Coal Project - (Compliance Energy Corporation)

Corporate Office

550 - 800 West Pender Street, Vancouver, B.C. V6C 2V6

Tel: (604) 689-0489

Fax: (604) 681-5910

Website: www.complianceenergy.com

Location: 300 km east of Vancouver. Near the town of Princeton

* August 2010, the mine remains on care and maintenance and is not operating.

Dillon/Brule Mine - (Western Canadian Coal Corp.)

Corporate Office

1000 - 885 Dunsmuir Street, Vancouver, B.C. V6C 1N5

Tel: (604) 608-2692

Fax: (604) 629-007

Human Resources, Western Coal Corp.

1000 – 885 Dunsmuir Street, Vancouver, B.C. V6C 1N5

Fax: (604) 629-0075

Email: humanresources@westerncoal.com

Website: www.westerncoal.com

Location: Northwest of Tumbler Ridge

Elkview Operations - (Teck Coal (Elk Valley Coal) – 95% interest and Nippon Steel Corporation 5% interest)

RR #1, Highway #3, Sparwood, B.C. V0B 2G0

Tel: (250) 425-8325

Fax: (250) 425-8763

Website: www.teck.com

Apply online.

Location: 3 km east of Sparwood

Line Creek Mine – (Teck Cominco Ltd. – 100%)

P.O. Box 2003, Sparwood, B.C. V0B 2G0

Tel: (250) 425-2555

Fax: (250) 425-7144

Website: www.teck.com

Apply online.

Location: 25 km north of Sparwood

Peace River Coal Inc. – (Anglo American plc – 74% interest, Northern Energy & Mining Inc. and Hillsborough Resources Ltd. 26% interest)

Corporate Office

Suite 1900 – 1055 West Hastings Street

Vancouver, B.C. V6E 2E9

Tel: (778) 786-7400

Fax: (604) 688-5210

Job Opportunities:

Tumbler Ridge Human Resources Team

P.O. Box 919

Tumbler Ridge, B.C. V0C 2W0

Tel: (604) 699-6700

Fax: (604) 699-6775

Email: hr@peacerivercoal.com

Location: Tumbler Ridge

Quinsam Coal Mine (Hillsborough Resources Ltd.)

Corporate Office

Suite 950 – 1090 West Georgia Street

Vancouver, B.C. V6E 3V7

Tel: (604) 684-9288

Fax: (604) 684-3178

Mine Address:

Km 12, Highway 28, Argonaut Main

P.O. Box 5000

Campbell River, B.C. V9W 5C5

Tel: (250) 286-3224

Fax: (250) 286-9727

Email: qce@island.net

Website: www.hillsboroughresources.com

Location: Near Campbell River

Wolverine Mine (Western Canadian Coal Corp.)

Corporate Office

1000 - 885 Dunsmuir Street

Vancouver, B.C. V6C 1N5

Tel: (604) 608-2692

Fax: (604) 629-0075

Human Resources, Western Coal Corp.

1000 - 885 Dunsmuir Street

Vancouver, B.C. V6C 1N5

Fax: (604) 629-0075

E-mail: humanresources@westerncoal.com

Website: www.westerncoal.com

Location: Tumbler Ridge

Mineral Mines

Apple Bay - (Electra Gold Ltd.)

Unit #5 - 2330 Tyner Street, Port Coquitlam, BC V3C 2Z1

Tel: (604) 696-1022

Fax: (604) 944-6102

E-mail: info@electragoldltd.com

Website: www.electragoldltd.com

Location: Southwest of the town of Port Hardy on northern Vancouver Island)

Ashcroft Quarry (I.G. Machine & Fibers Ltd.)

909 Barnes Lake Road, P.O. Box 1000, Ashcroft, BC V0K 1A0

Tel: (250) 453-9015

Fax: (250) 453-9078

Website: www.iko.com

Location: Ashcroft

Basalt Quarry - (Kettle Valley Stone Company)

204 Cambro Road, Kelowna, BC V1X 7T3

Tel: (250) 491-0405

Toll Free: (877) 670-7625

Fax: (250) 491-4959

Email: marty@kettlevalleystone.com

Website: www.kettlevalleystone.com

Blubber Bay Quarry - (Ash Grove Cement Company)

Attn: Mark Rousseau - Quarry Manager

P.O. Box 126, Blubber Bay, BC V0N 1E0

Tel: (604) 486-7715

Fax: (604) 486-7701

Email: markr@blubberbay.com

Website: www.blubberbay.com

Location: Texada Island – 160 km northwest of downtown Vancouver

Brisco - (Rocky Mountain Tufa)

P.O. Box 66, Brisco, B.C. V0A 1B0

Tel: (250) 341-6865

Fax: (250) 341-6896

Website: www.tufa.bc.ca

Location: South eastern corner of BC

Coast Aggregates Ltd.

2600 Centennial Way, P.O. Box 190, Station Main, Squamish, B.C. V8B 0A2

Tel: (604) 898-6005

Fax: (604) 898-4852

Email: beva@cardinalconcrete.ca

Website: www.coastaggregates.com (Apply online)

Location: Squamish

Craigmont Mines - (Craigmont Mines A Joint Venture)

Corporate Office

320 - 1639 West 2nd Avenue, Vancouver, B.C. V6J 1H3

Tel : (604) 738-3434

Fax : (604) 738-4034

Merritt Office, P.O. Box 3000, Merritt, B.C. V1K 1B8

Tel: (250) 378-2212

Fax: (250) 378-5794

E-mail: info@craigmontmines.com

Website: www.craigmontmines.com

Location: 10 km west of Merritt

Dahl Lake Quarry - (Northrock Industries Ltd.)

3905 - 18th Avenue, Prince George, BC V2N 1B2

Tel: (250) 561-2770

Fax: (250) 564-5616

Location: 35 km southwest of Prince George

Elkhorn - (BPB Canada Inc.)

1070 Derwent Way, Delta, B.C. V3M 5R1

Tel: (604) 525-3461

Fax: (604) 525-9714

Location: Near Windermere in southeast B.C.

Four J Mine - (Georgia Pacific Canada Inc.)

9080 Hwy 93 & 95, Canal Flats, B.C. V0B 1B0

Tel: (250) 349-7517

Fax: (250) 349-7519

Gillies Bay Mine - (Texada Quarrying Ltd. & Lafarge Canada Ltd.)

Iron Mine Road, Box 160, Van Anda, B.C. V0N 3K0

Tel: (604) 486-0486

Fax: (604)486-7280

Location: Nanaimo

Graymont Pavilion Plant - (Graymont Western Canada Inc.)

P.O. Box 187, Cache Creek, B.C. V0K 1H0

Tel: (250) 457-6291

Fax: (250) 457-5364

Email: careers@graymont.com

Website: www.graymont.com

Imasco Minerals Inc. - (Imasco Minerals Ltd.)

Creston Plant, P.O. Box 56, Sirdar, B.C. V0B 2C0

Tel: (250) 866-5292

Fax: (250) 866-5455

E-mail: imasco@imascominerals.com

Website: www.imascominerals.com

Imperial Limestone Co. Ltd.

4105 Gracemere Street
P.O. Box 190, Van Anda, B.C. V0N 3K0
Tel: (604) 486-7623
Fax: (604) 486-7509

Jade West - (Division of Jade Resources Ltd.)

638 - 176th Street, South Surrey, B.C. V3S 9S6
Tel: (604) 538-4525
Fax: (604) 538-5490
Website: www.jademine.com
Location: 3 mines located in northern B.C., 100 miles east of the Alaskan border

Kettle Valley Pit/Quarry - (Kettle Valley Stone Company)**Mount Ash Quarry**

204 Cambro Road, Kelowna, B.C. V1X 7T3
Tel: (250) 491-040
Toll Free: (877) 670-7625
Fax: (250) 491-4959
Email: marty@kettlevalleystone.com
Website: www.kettlevalleystone.com
Location: South Kelowna

Lafarge Canada Inc.

RR 2 Site 12 Comp 1
9750 Shuswap Road, Kamloops, B.C. V2C 2J3
Tel: (250) 573-3211
Fax: (250) 573-4010
Website: www.lafargenorthamerica.com

Moberly Mine - (Heemskrik Canada, Dynatec Corp.)

1725 Blaeberry River Road East
P.O. Box 570, East Golden, B.C. V0A 1H1
Tel: (250) 344-7171
Fax: (250) 344-7343
E-mail: custgold@heemskirkcanada.com
Website: www.heemskirkcanada.com

Monteith Bay Mine - (Pozzolan International Limited)

7777 Ross Road, Delta, B.C. V4G 1B8
P.O. Box 950, Delta, B.C. V4K 3S6
Tel: (604) 946-3842
Toll Free: (800) 665-3484
Fax (604) 946-2420
E-mail: recruitment@lehighcement.com
Website: www.lehighcement.com
Location: Vancouver Island

Mount Brussilof (Baymag Mines Co. Ltd.)

4892 Edelweiss
Radium Hot Springs, B.C. V0A 1M0
Tel: (250) 347-9517
Fax: (250) 347-9711
Website: www.baymag.com

Mount Meager - (Great Pacific Pumice Inc.)

1980 Centennial Way
P.O. Box 508
Squamish, B.C. V8B 0A4
Tel: (604) 892-7703
Fax: (604) 898-1112
Website: www.pumice.ca
Location: 150 km north of Vancouver

North Fork - (Roxul West Inc.)

6526 Industrial Park Way
P.O. Box 2890
Grand Forks, B.C. V0H 1H1
Tel: (250) 442-5253
Fax: (250) 442-5278
Email: jobs@roxul.com
Website: www.roxul.com

Northwest Landscape & Stone Supply Ltd.

16 Rotating quarries based out of Squamish, BC
5883 Byrne Road
Burnaby, B.C. V5J 3J1
Tel: (604) 435-4842
Fax: (604) 436-9443
Website: www.landscapesupply.com

Rock Creek Quarry - (Mighty White Dolomite Ltd.)

4115 Kettle Valley South Road
P.O. Box 10, Rock Creek, BC V0H 1Y0
Tel: (250) 446-2450
Fax: (250) 446-2707
E-mail: mightywhite@img.net

Sumas Mountain Mine - (Clayburn Industries Ltd.)

33765 Pine Street
Abbotsford, B.C. V2S 5C1
Tel: (604) 859-5288
Toll free: (800) 859-4885
Fax: (604) 859-0424
E-mail: inbox@clayburngroup.com
Website: www.clayburngroup.com

Sumas Shale - (Fraser Pacific Enterprises Inc.)

3883 Upper Sumas Mountain Road
Abbotsford, B.C.
P.O. Box 49, Station Main, Abbotsford, B.C. V2S 4N7
Tel: (604) 856-5443
Fax: (604) 852-2650

Teuton Resources Corp.

Various mines/quarries in exploration
#207 - 675 West Hastings Street
Vancouver, B.C. V6B 1N2
Tel: (604) 682-3680
Toll free: (800) 879-2333
Fax: (604) 682-3992
E-mail: dino.teuton@shawlink.ca
E-mail: gary.teuton@shawlink.ca
Website: www.teuton.com

Trail Operations - (Teck Cominco Ltd.)

P.O. Box 1000, Trail, B.C. V1R 4L8
Tel: (250) 364-4222
Fax: (250) 364-4109
Email: trail.operations@teck.com
Website: www.teckcominco.com

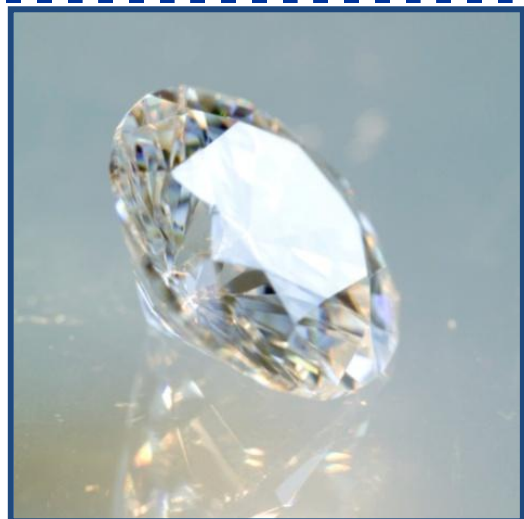
Certain Teed Gypsum Canada Inc.

1564 Windermere Loop Road
Windermere, B.C. V0A 1K0
Tel: (250) 342-9410
Fax: (250) 342-6311

Diamond Mines

Ascot Resources Ltd.

Suite 420 - 475 Howe Street
Vancouver, B.C. V6C 2B3
Tel: (604) 684-8950
Fax: (604) 684-9877
E-mail: info@ascotresources.ca
Website: www.ascotresources.ca



Diavik Mine – (Rio Tinto 60% interest and Harry Winston Diamond Corporation 40% interest)

Diavik Mines has an excellent website where you can find more information on their hiring practices, employment options and employment conditions. For more information visit www.diavik.ca.

General Contact Information Only

- Please view website for application information:

Diavik Diamond Mines Inc.
5007 – 50th Avenue
P.O. Box 2498 Station Main
Yellowknife, NT X1A 2P8
Tel: (867) 669-6500
Fax: (867) 669-9058
E-mail: diavik@riotinto.com
Website: www.diavik.ca

Location: 300 km northeast of Yellowknife and 30 km from the Ekati mine

Ekati Mine (BHP Billiton Diamonds inc. – 80% interest and 2 Geologists, Charles Fipke – 10% interest and Dr. Stewart Blusson – 10% interest)

To apply, please submit an online application through BHP Billiton website.
Website: www.bhpbilliton.com click “People and Employment” link to view and apply for positions with Ekati Mine.

General Contact Information Only

EKATI Diamond Mine

Tel: (867) 880-2200
Fax: (867) 880-4602

Yellowknife Office

BHP Billiton Diamonds Inc.
#1102, 4920 - 52nd Street, Yellowknife, NT , Canada X1A 3T1
Tel: (867) 669-6100
Fax: (867) 669-9293
Location: 300 km northeast of Yellowknife

Agnico Eagle Mines Limited

Corporate Office
400 – 543 Granville Street, Vancouver, B.C. V6C 1X8
Human Resources, Ms. Annalisa Jose
Tel: (604) 608-2557 Ext. 6533
Fax: (604) 608-2559
Email: hrvancouver@agnico-eagle.com
Website: www.tahera.com

High Arctic Project – (Burnstone Ventures Inc.)

Suite 800 - 1199 West Hastings Street
Vancouver, B.C. V6E 3T5
Tel: (604) 687-2038
Fax: (604) 687-3141
E-mail: burnstone@pendergroup.com
Website: www.burnstoneventures.com
Location: Eastern Arctic

Shore Gold Inc.

300, 224 - 4th Avenue South
Saskatoon, Saskatchewan S7K 5M5
Tel: (306) 664-2202
Fax: (306) 664-7181
E-mail: careers@shoregold.com
Website: www.shoregold.com

Snap Lake (DeBeers Canada – 100% interest)

Corporate Office
300 - 65 Overlea Blvd.
Toronto, ON M4H 1P1
Tel: (416) 645-1710
Fax: (416) 429-2462
Mine site:
Fax: (867) 766-7345
Email: hrrsnaplake@debeersgroup.ca
Website: www.debeerscanada.com

Stornoway Diamond Corporation

Unit 116 - 980 West 1st Street
North Vancouver, B.C. V7P 3N4
Tel: (604) 983-7750
Toll Free: (877) 331-2232
Fax: (604) 987-7107
E-mail: resumes@stornowaydiamonds.com
Website: www.stornowaydiamonds.com



Additional Resources:

Mining Directories

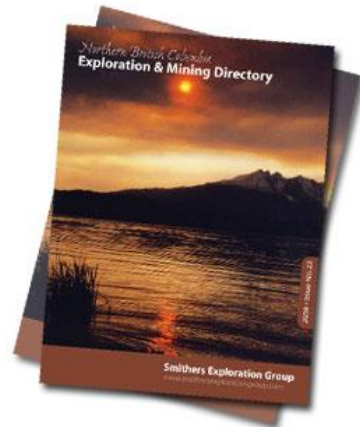
The Kamloops Work Search Centre has acquired different directories related to the mining industry. Please ask for assistance if you are unable to locate them.

Northern BC Exploration & Mining Directory

www.smithersexplorationgroup.com

Smithers Exploration Group publishes an annual Exploration and Mining Directory for Northwest British Columbia. It covers the following services:

- Companies: Exploration and Mining Consultants:
Engineering and Surveying, Environmental, Geosciences
- Cooks & First Aid Attendants
- Drilling Companies
- Expeditors 32 Government
- First Nations
- Mines
- Organizations
- Prospectors
- Service Groups: Accommodation, Supplies & Services,
- 50 First Aid & Safety, Food Services, Laboratories
- Transportation



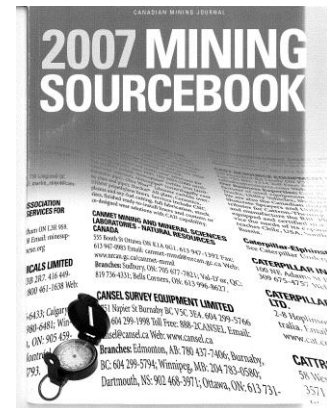
2007 Mining Source Book Canadian Mining Journal

www.canadianminingjournal.com

Publication Contents:

- Buyers' Guide
- Underground Mine Data
- Open Pit Mine Data
- Mineral Processing Plant Data
- Environmental Data

Technical details and operating costs for underground and open pit mines and mills in Canada in easy-to-read tables.



Canadian and American Mines Handbook

The Handbook provides concise snapshots of over 2400 Canadian and US mining companies, mines, and associated organizations such as smelters, refineries, and industry associations.

